

Features

- Low switching losses
- Double-side cooling
- Hermetically Cold-welded

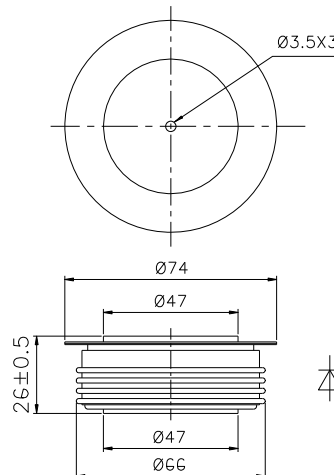
Typical Applications

- High power convertor
- Motor drive equipment
- Flexible AC transmission system

I_{F(AV)} 700 A
V_{RRM} 4000 ~ 4500V
trr 7.0 μs

SYMBOL	CHARACTERISTIC	TEST CONDITIONS		T _j (°C)	VALUE			UNIT	
					Min	Type	Max		
I _{F(AV)}	Mean forward current	180° half sine wave 50Hz Double side cooled	T _c =70°C	125			700	A	
V _{RRM}	Repetitive peak reverse voltage	tp=10ms		125	4000		4500	V	
I _{RRM}	Repetitive peak current	at V _{RRM}		125			100	mA	
I _{FSM}	Surge forward current	10ms half sine wave		125			16	kA	
I ² t	I ² t for fusing coordination	V _R =0					1280	10 ³ A ² s	
V _{FO}	Threshold voltage			125			1.70	V	
r _F	Forward slope resistance						0.98	mΩ	
V _{FM}	Peak forward voltage	I _{FM} =2000A, F=24kHz		25			3.80	V	
I _m	Reverse recovery current			125		610		A	
t _{rr}	Reverse recovery time	I _{TM} =1000A, tp=4000μs, di/dt=-60A/μs, V _R =100V				7.0			μs
Q _{rr}	Recovery charge					1500			μC
R _{th(j-c)}	Thermal resistance Junction to case	D.C. double side cooled Clamping force 24kN					0.020	°C/W	
R _{th(c-h)}	Thermal resistance case to heatsink						0.005		
F _m	Mounting force				19		26	kN	
T _{vj}	Junction temperature				-40		125	°C	
T _{stg}	Stored temperature				-40		140	°C	
W _t	Weight					440		g	
Outline	P42								

Outline:



Nlps reserves the right to change specifications without notice.