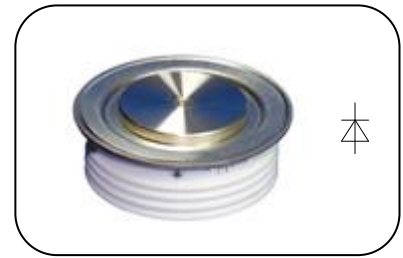


Features

- Low forward voltage drop
- Soft recovery
- Hermetic metal cases with ceramic insulators

$I_{F(AV)}$ **630A**
 V_{RRM} **1100~2000V**
 t_{rr} **3.0 μ s**

**Typical Applications**

- Inverters and choppers
- Motor control
- Snubber and free-wheeling diodes

SYMBOL	CHARACTERISTIC	TEST CONDITIONS	$T_j(^{\circ}\text{C})$	VALUE			UNIT
				Min	Type	Max	
$I_{F(AV)}$	Mean forward current	180° half sine wave 50Hz Double side cooled, $T_c=70^{\circ}\text{C}$	125			630	A
V_{RRM}	Repetitive peak reverse voltage	$t_p=10\text{ms}$	125	1100		2000	V
I_{RRM}	Repetitive peak current	at V_{RRM}	125			30	mA
I_{FSM}	Surge forward current	10ms half sine wave	125			7.5	kA
I^2t	I^2t for fusing coordination	$V_R=0.6V_{RRM}$				281	$\text{A}^2\text{s} \cdot 10^3$
V_{FO}	Threshold voltage		125			1.30	V
r_F	Forward slope resistance					0.42	m Ω
V_{FM}	Peak forward voltage	$I_{FM}=1200\text{A}$, $F=7.0\text{kN}$	125			1.80	V
I_{rm}	Reverse recovery current	$I_{FM}=1000\text{A}$, $t_p=2000\mu\text{s}$, $-di/dt=60\text{A}/\mu\text{s}$, $V_R=50\text{V}$	125		42		A
t_{rr}	Reverse recovery time				3.0		μs
Q_{rr}	Recovery charge				63		μC
$R_{th(j-c)}$	Thermal resistance Junction to case	DC double side cooled Clamping force 7.0kN				0.045	$^{\circ}\text{C}/\text{W}$
$R_{th(c-h)}$	Thermal resistance case to heat sink					0.010	
F_m	Mounting force			5.3		10	kN
T_{stg}	Stored temperature			-40		160	$^{\circ}\text{C}$
W_t	Weight				80		g
Outline	P33						

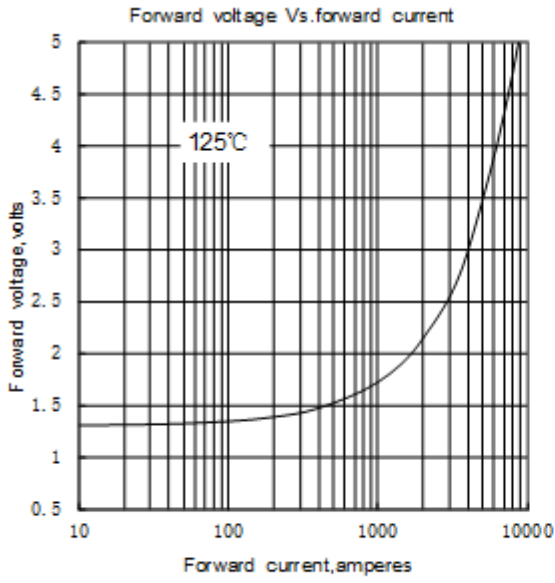


Fig.1

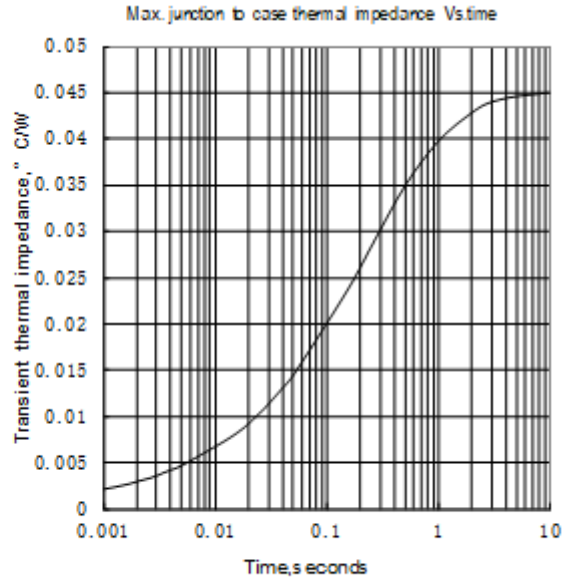


Fig.2

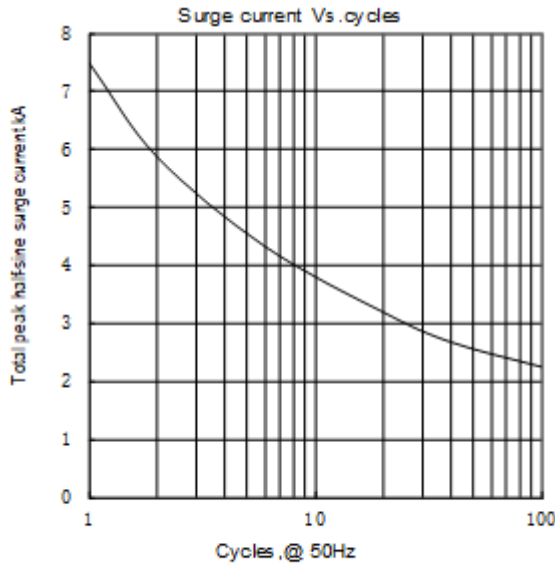
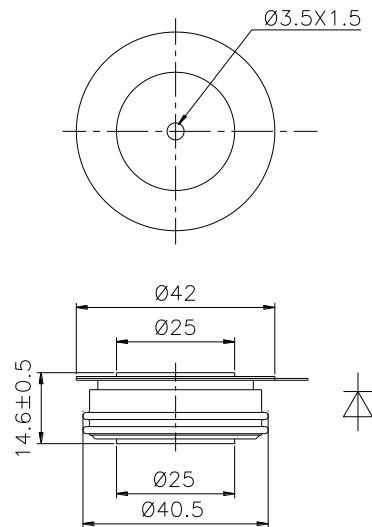


Fig.3



Nlps reserves the right to change specifications without notice.