

Features

- Low forward voltage drop
- High reverse voltage
- Hermetic metal cases with ceramic insulators

Typical Applications

- All purpose high power rectifier diodes
- High power resistance welding equipment
- Non-controllable and half-controllable rectifiers
- Controlled rectifiers

$I_{F(AV)}$ 5650A
 V_{RRM} 4300~5000 V
 I_{FSM} 58 kA
 I^2t 16820 10³A²S



SYMBOL	CHARACTERISTIC	TEST CONDITIONS	T _J (°C)	VALUE			UNIT
				Min	Type	Max	
$I_{F(AV)}$	Mean forward current	180° half sine wave 50Hz Double side cooled, T _C =85°C	150			5650	A
V_{RRM}	Repetitive peak reverse voltage	tp=10ms	150	4300		5000	V
I_{RRM}	Repetitive peak current	at V_{RRM}	150			300	mA
I_{FSM}	Surge forward current	10ms half sine wave	150			58	kA
I^2t	I^2t for fusing coordination	$V_R=0.6V_{RRM}$					16820
V_{FO}	Threshold voltage		150			0.91	V
r_F	Forward slope resistance						0.10
V_{FM}	Peak forward voltage	$I_{FM}=5000A, F=108kN$	150			1.41	V
Q_{rr}	Recovery charge	$I_{FM}=2000A, tp=2000\mu s, di/dt=-20A/\mu s, V_R=50V$	150		9000		μC
$R_{th(j-c)}$	Thermal resistance Junction to case	DC double side cooled Clamping force 108kN				0.0050	°C/W
$R_{th(c-h)}$	Thermal resistance case to heat sink					0.0015	
F_m	Mounting force			81		108	kN
T_{stg}	Stored temperature			-40		160	°C
W_t	Weight				2000		g
Outline	P48						

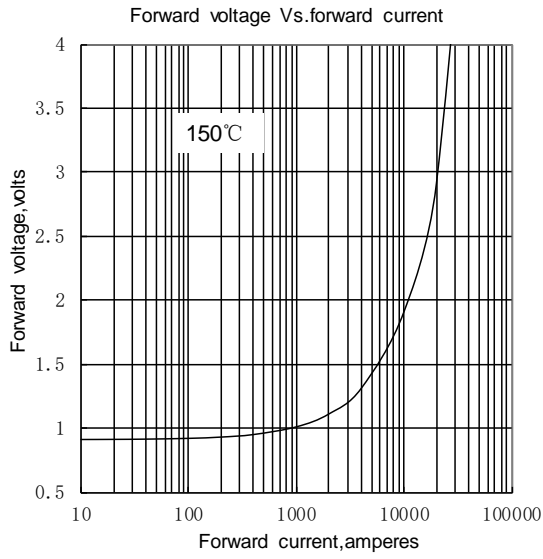


Fig.1

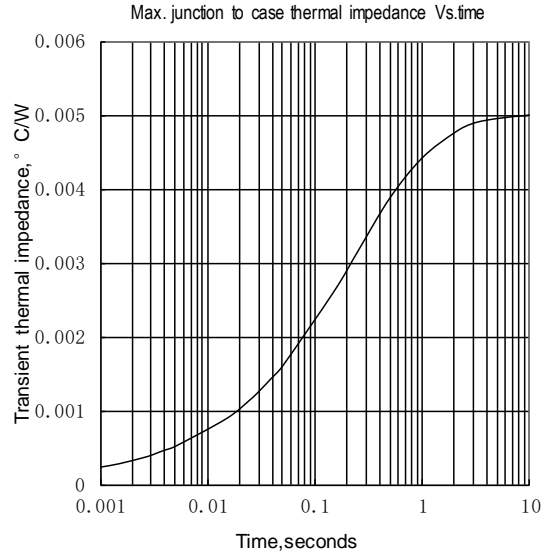


Fig.2

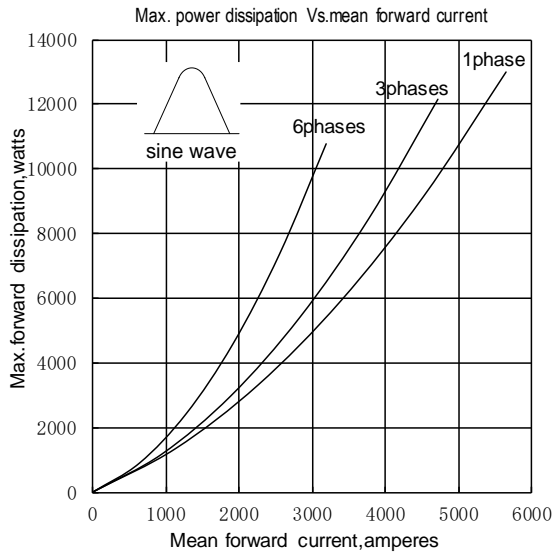


Fig.3

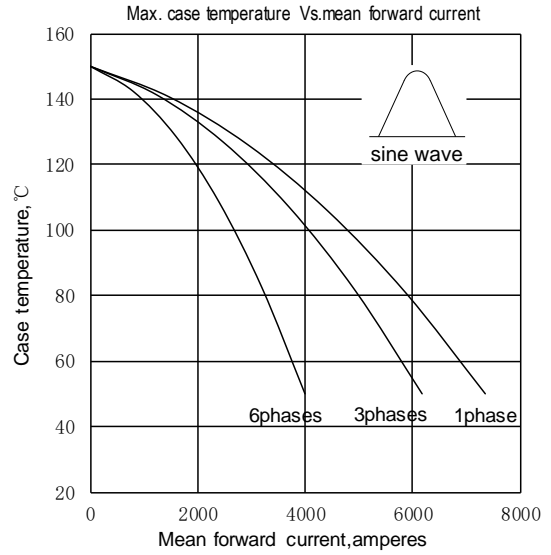


Fig.4

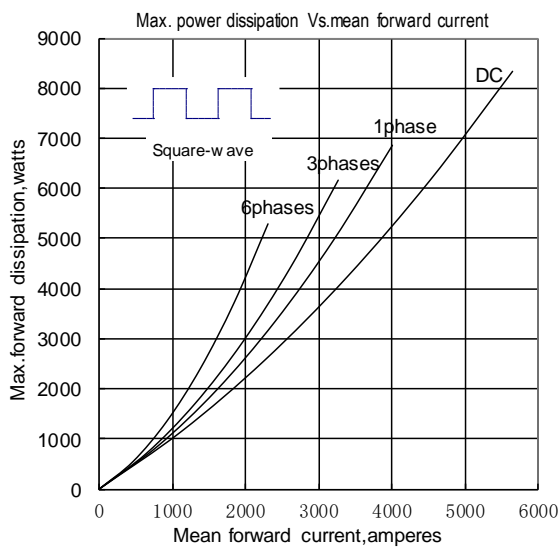


Fig.5

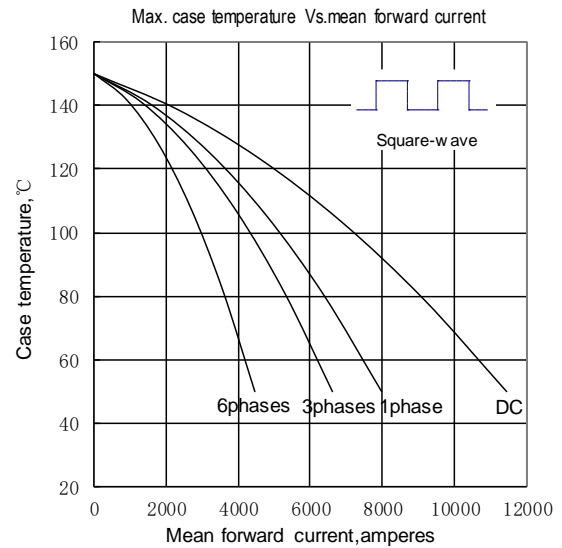


Fig.6

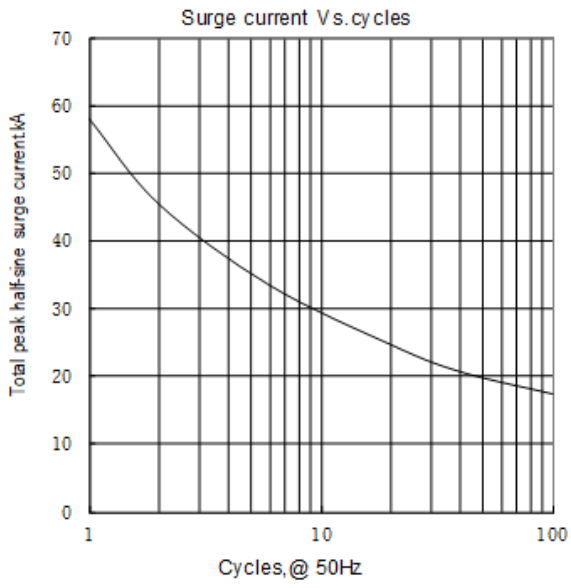
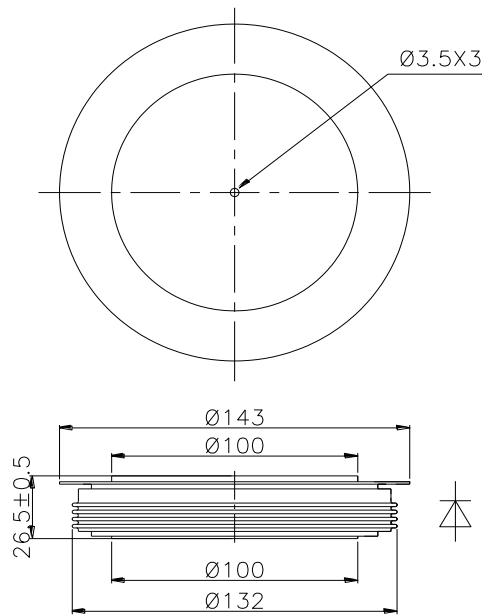


Fig.7



Nlps reserves the right to change specifications without notice.