

Features

- Center amplifying gate
- Metal case with ceramic insulator
- Low on-state and switching losses

Typical Applications

- AC controllers
- DC and AC motor control
- Controlled rectifiers

$I_{T(AV)}$	4000A
V_{DRM}/V_{RRM}	2200 ~ 3000V
I_{TSM}	60 kA
I^2t	18000 $10^3 A^2s$

SYMBOL	CHARACTERISTIC	TEST CONDITIONS	$T_j(^{\circ}C)$	VALUE			UNIT
				Min	Type	Max	
$I_{T(AV)}$	Mean on-state current	180° half sine wave 50Hz Double side cooled, $T_C=70^{\circ}C$	125			4000	A
V_{DRM} V_{RRM}	Repetitive peak off-state voltage Repetitive peak reverse voltage	$t_p=10ms$	125	2200		3000	V
I_{DRM} I_{RRM}	Repetitive peak current	at V_{DRM} at V_{RRM}	125			400	mA
I_{TSM}	Surge on-state current	10ms half sine wave	125			60	kA
I^2t	I^2t for fusing coordination	$V_R=0.6V_{RRM}$				18000	$A^2s \cdot 10^3$
V_{TO}	Threshold voltage		125			0.95	V
r_T	On-state slope resistance					0.10	m Ω
V_{TM}	Peak on-state voltage	$I_{TM}=3000A, F=70kN$	25			1.40	V
dv/dt	Critical rate of rise of off-state voltage	$V_{DM}=0.67V_{DRM}$	125			1000	V/ μs
di/dt	Critical rate of rise of on-state current	$V_{DM}=67\%V_{DRM}$ Gate pulse $t_r \leq 0.5\mu s$ $I_{GM}=1.5A$	125			200	A/ μs
Q_{rr}	Recovery charge	$I_{TM}=2000A, t_p=4000\mu s, di/dt=-5A/\mu s,$ $V_R=100V$	125		3800		μC
I_{GT}	Gate trigger current	$V_A=12V, I_A=1A$	25	40		300	mA
V_{GT}	Gate trigger voltage			0.8		3.0	V
I_H	Holding current			25		200	mA
I_L	Latching current					1000	mA
V_{GD}	Non-trigger gate voltage	$V_{DM}=67\%V_{DRM}$	125			0.3	V
$R_{th(j-c)}$	Thermal resistance Junction to case	D.C. Double side cooled Clamping force 70.0kN				0.007	$^{\circ}C/W$
$R_{th(c-hs)}$	Thermal resistance case to heatsink					0.002	$^{\circ}C/W$
F_m	Mounting force			63		84	kN
T_{vj}	Junction temperature			-40		125	$^{\circ}C$
T_{stg}	Stored temperature			-40		140	$^{\circ}C$
W_t	Weight				1390		g
Outline	P19						

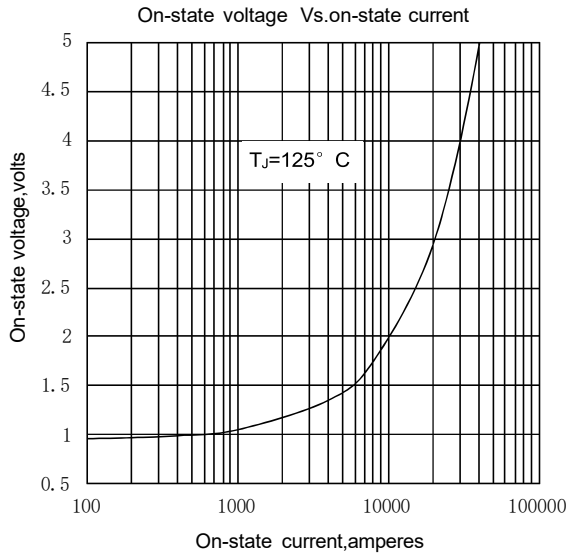


Fig.1

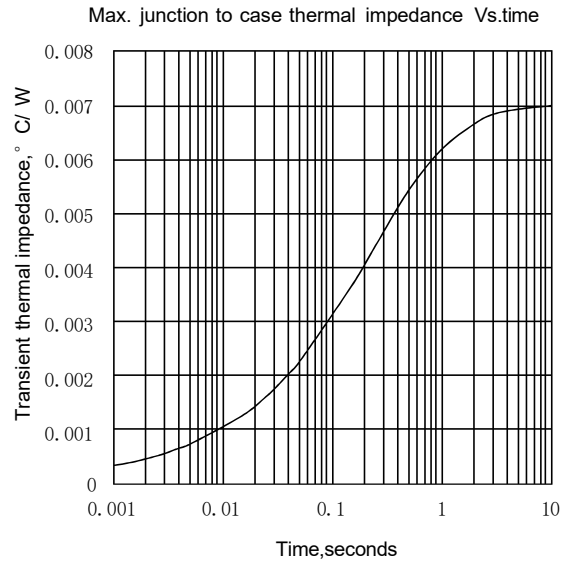


Fig.2

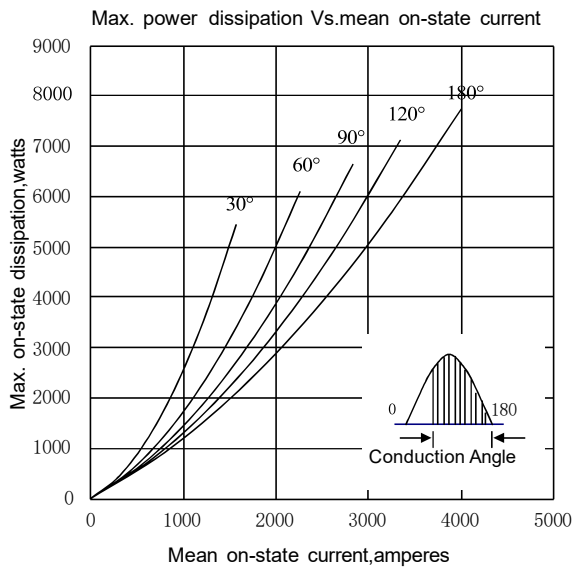


Fig.3

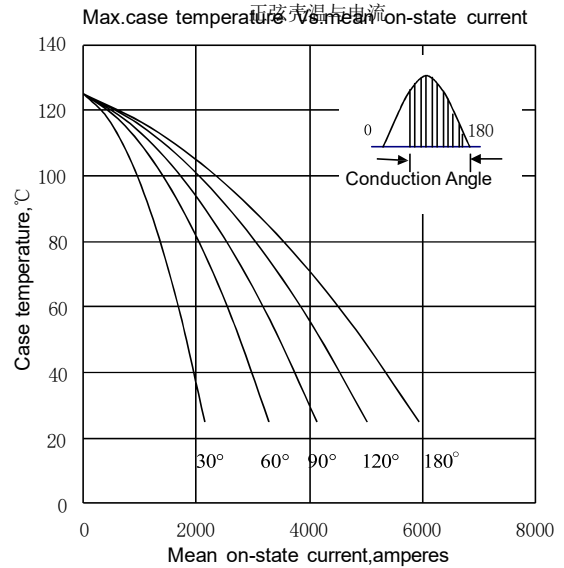


Fig.4

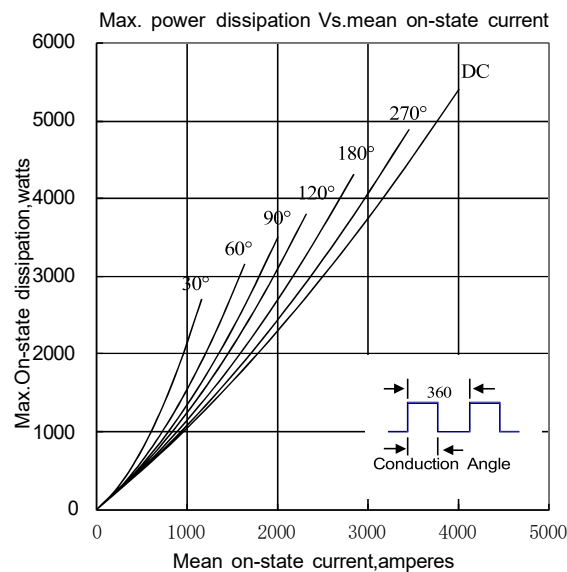


Fig.5

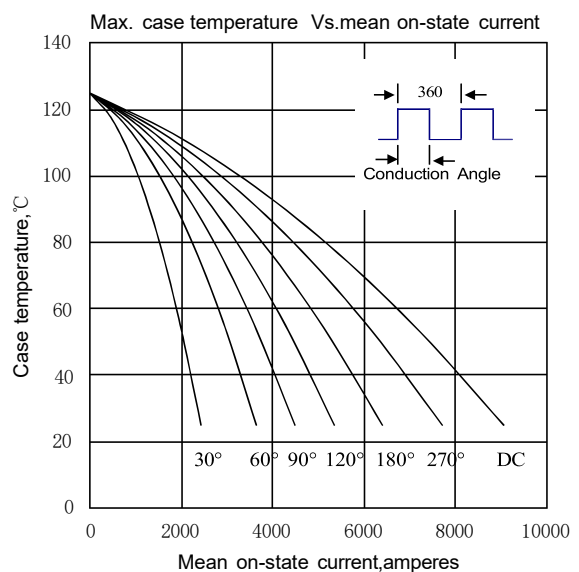


Fig.6

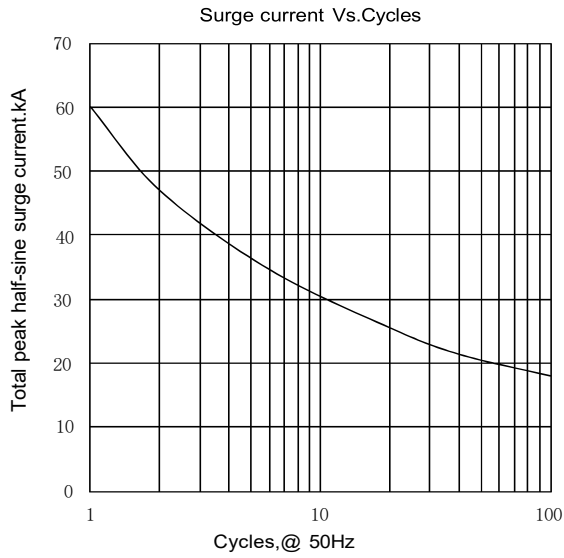


Fig.7

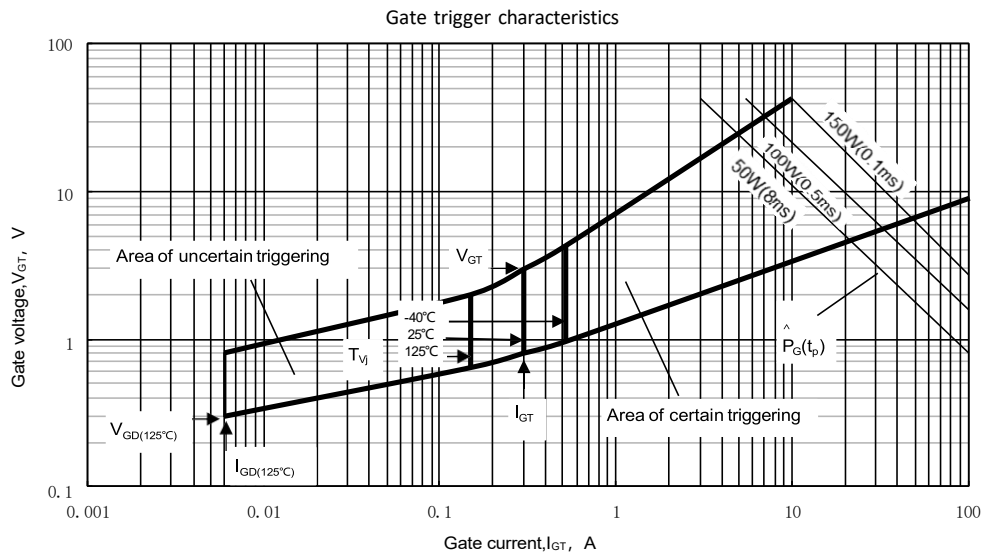
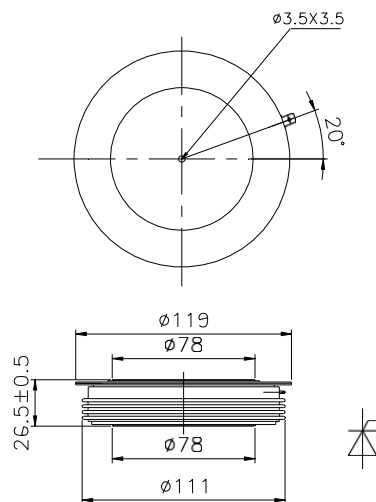


Fig.8

Outline:



Nlps reserves the right to change specifications without notice.