

Features

- Low forward voltage drop
- Soft recovery
- Hermetic metal cases with ceramic insulators

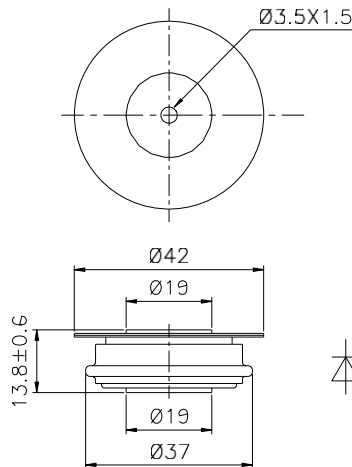
I_{F(AV)} 390 A
V_{RRM} 1100 ~ 2000V
trr 2.0 μs

Typical Applications

- Inverters and choppers
- AC. motor control
- Snubber and free-wheeling diodes

SYMBOL	CHARACTERISTIC	TEST CONDITIONS		T _J (°C)	VALUE			UNIT
					Min	Type	Max	
I _{F(AV)}	Mean forward current	180° half sine wave 50Hz Double side cooled,	T _C =85°C	150			390	A
V _{RRM}	Repetitive peak reverse voltage	tp=10ms		150	1100		2000	V
I _{RRM}	Repetitive peak current	at V _{RRM}		150			20	mA
I _{FSM}	Surge forward current	10ms half sine wave		150			5.4	kA
I ² t	I ² t for fusing coordination	V _R =0.6V _{RRM}					146	A ² s*10 ³
V _{FO}	Threshold voltage			150			1.48	V
r _F	Forward slope resistance						0.65	mΩ
V _{FM}	Peak forward voltage	I _{TM} =600A, F=5.0kN		25			2.40	V
I _m	Reverse recovery current	I _{TM} =1000A, tp=4000μs, di/dt=-60A/μs, V _R =100V		150		50		A
t _{rr}	Reverse recovery time					2.0		μs
Q _{rr}	Recovery charge					50	70	μC
R _{th(j-c)}	Thermal resistance Junction to case	D.C. double side cooled Clamping force 5.0kN		150			0.080	°C/W
R _{th(c-h)}	Thermal resistance case to heat sink						0.020	
F _m	Mounting force				3.3		5.5	kN
T _{vj}	Junction temperature				-40		150	°C
T _{stg}	Stored temperature				-40		160	°C
W _t	Weight					60		g
Outline	P32							

Outline:



Nlps reserves the right to change specifications without notice.