

**Features**

- Low forward voltage drop
- Soft recovery
- Hermetic metal cases with ceramic insulators

$I_{F(AV)}$       **340A**  
 $V_{RRM}$         **1100~2000V**  
 $t_{rr}$             **2.0 $\mu$ s**

**Typical Applications**

- Inverters and choppers
- AC. motor control
- Snubber and free-wheeling diodes

SYMBOL	CHARACTERISTIC	TEST CONDITIONS		T <sub>j</sub> (°C)	VALUE			UNIT
					Min	Type	Max	
$I_{F(AV)}$	Mean forward current	180° half sine wave 50Hz Double side cooled,	T <sub>C</sub> =70°C	125			340	A
$V_{RRM}$	Repetitive peak reverse voltage	tp=10ms		125	1100		2000	V
$I_{RRM}$	Repetitive peak current	at $V_{RRM}$		125			16	mA
$I_{FSM}$	Surge forward current	10ms half sine wave $V_R=0.6V_{RRM}$		125			5.4	kA
$I^2t$	$I^2t$ for fusing coordination						146	A <sup>2</sup> s*10 <sup>3</sup>
$V_{FO}$	Threshold voltage			125			1.48	V
$r_F$	Forward slope resistance						0.65	mΩ
$V_{FM}$	Peak forward voltage	$I_{FM}=600A, F=5.0kN$		125			1.87	V
$I_{rm}$	Reverse recovery current	$I_{FM}=500A, tp=2000\mu s,$ $-di/dt=60A/\mu s, V_R=50V$		125		50		A
$t_{rr}$	Reverse recovery time					2.0	$\mu$ s	
$Q_{rr}$	Recovery charge					50	$\mu$ C	
$R_{th(j-c)}$	Thermal resistance Junction to case	DC double side cooled Clamping force 5.0kN					0.080	°C/W
$R_{th(c-h)}$	Thermal resistance case to heat sink						0.020	
$F_m$	Mounting force				3.3		5.5	kN
$T_{stg}$	Stored temperature				-40		160	°C
$W_t$	Weight					60		g
Outline	P32							

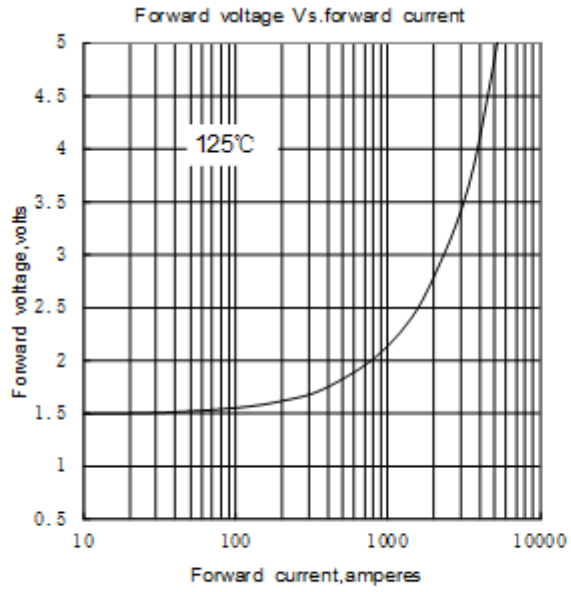


Fig.1

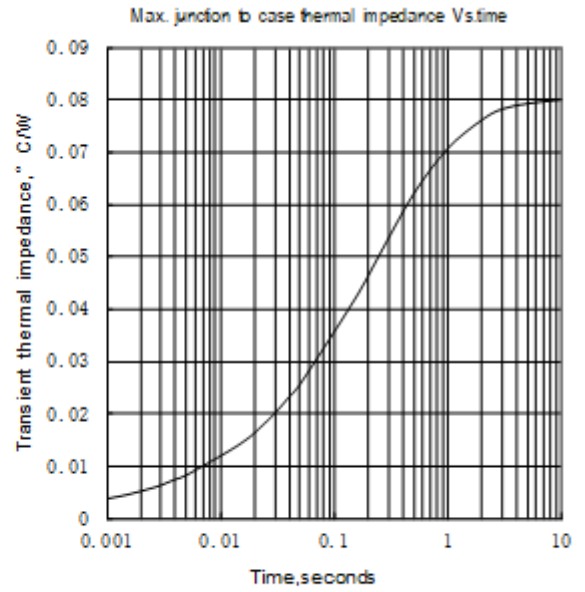


Fig.2

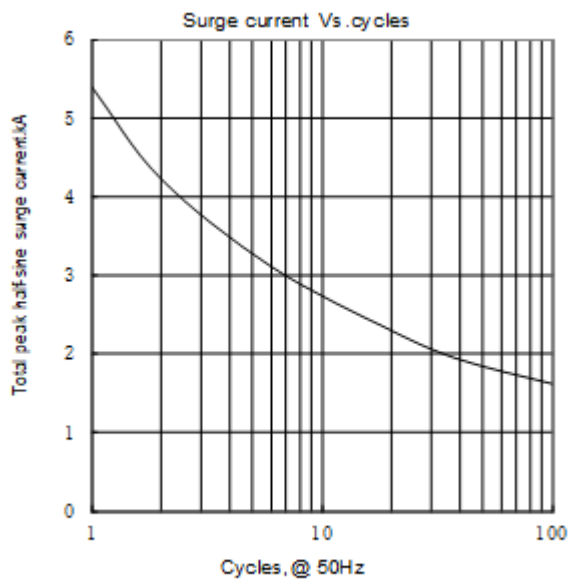
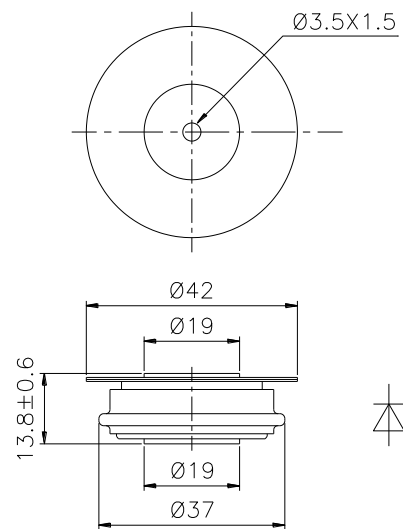


Fig.3



Nlps reserves the right to change specifications without notice.