

**Features**

- Small recovered charge
- Soft recovery
- Up to 5000V reverse voltage
- Capsule type metal-ceramic packages for double sided cooling

**I<sub>F(AV)</sub> 2600 A**  
**V<sub>R(RM)</sub> 4000 ~ 5000V**  
**trr 15 μs**

**Typical Applications**

- Inverse diodes for power transistors,GTO thyristors
- AC motor control
- Snubber diodes and free-wheeling diodes

SYMBOL	CHARACTERISTIC	TEST CONDITIONS		T <sub>j</sub> (°C)	VALUE			UNIT
					Min	Type	Max	
I <sub>F(AV)</sub>	Mean forward current	180° half sine wave 50Hz Double side cooled,	T <sub>C</sub> =70°C	125			2600	A
V <sub>R(RM)</sub>	Repetitive peak reverse voltage	tp=10ms		125	4000		5000	V
I <sub>R(RM)</sub>	Repetitive peak current	at V <sub>R(RM)</sub>		125			120	mA
I <sub>FSM</sub>	Surge forward current	10ms half sine wave		125			40	kA
I <sup>2</sup> t	I <sup>2</sup> t for fusing coordination	V <sub>R</sub> =0.6V <sub>R(RM)</sub>					8000	A <sup>2</sup> s*10 <sup>3</sup>
V <sub>FO</sub>	Threshold voltage			125			1.10	V
r <sub>F</sub>	Forward slope resistance						0.47	mΩ
V <sub>FM</sub>	Peak on-state voltage	I <sub>FM</sub> =5000A, F=70kN		125			2.60	V
I <sub>m</sub>	Reverse recovery current			125		450		A
t <sub>rr</sub>	Reverse recovery time	I <sub>FM</sub> =2000A, tp=2000μs, di/dt=-60A/μs, V <sub>R</sub> =50V				15		μs
Q <sub>rr</sub>	Recovery charge					4300		μC
R <sub>th(j-c)</sub>	Thermal resistance Junction to case	D.C.: double side cooled Clamping force 70kN					0.005	°C/W
R <sub>th(c-h)</sub>	Thermal resistance case to heatsink						0.0015	
F <sub>m</sub>	Mounting force				63		84	kN
T <sub>stg</sub>	Stored temperature				-40		125	°C
W <sub>t</sub>	Weight					1390		g
Outline	P47							

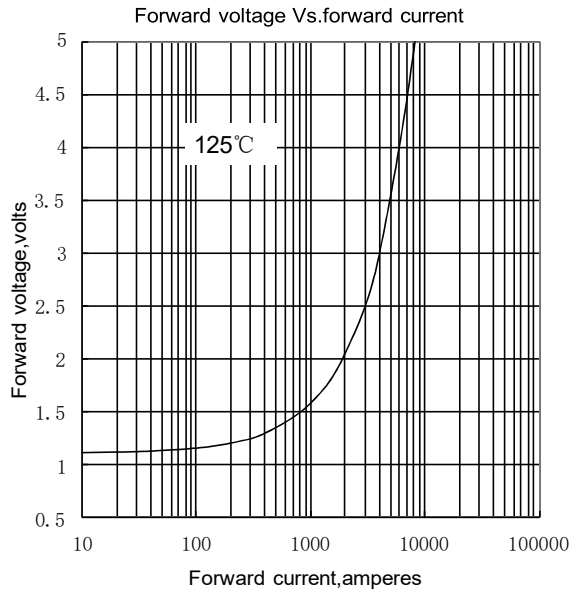


Fig.1

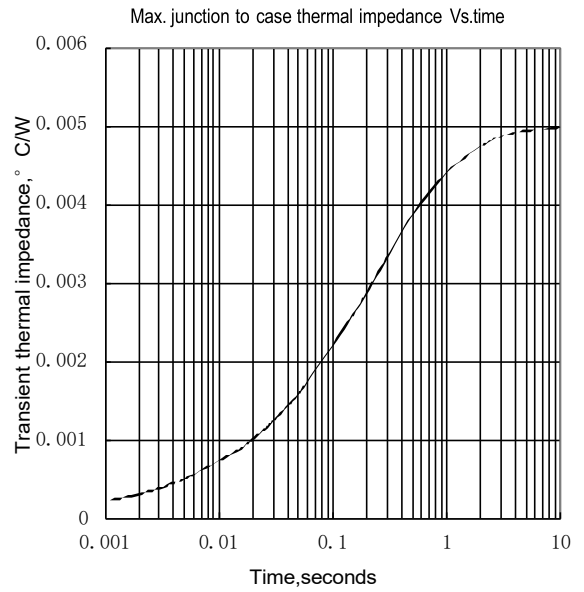


Fig.2

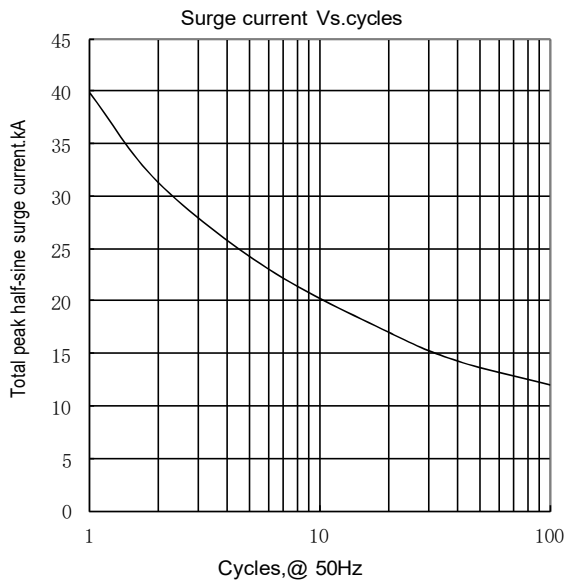
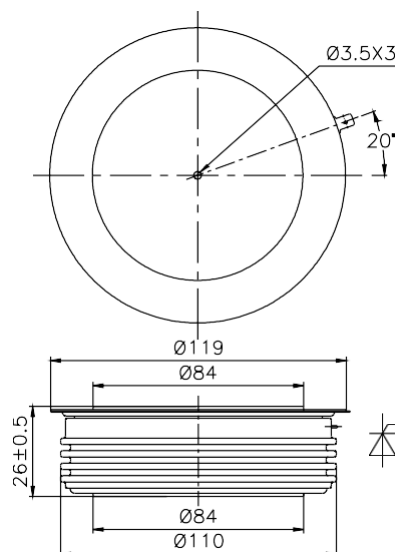


Fig.3

Outline:



Nips reserves the right to change specifications without notice.