

Features

- Low forward voltage drop
- High reverse voltage
- Hermetic metal cases with ceramic insulators

Typical Applications

- All purpose high power rectifier diodes
- High power resistance welding equipment
- Non-controllable and half-controllable rectifiers
- Controlled rectifiers

 $I_{F(AV)}$ 2490A **V_{RRM} 4300 ~ 5000V** **I_{FSM} 26 kA** **I^2t 3380 10³A²S**

SYMBOL	CHARACTERISTIC	TEST CONDITIONS		$T_j(^{\circ}\text{C})$	VALUE			UNIT
					Min	Type	Max	
$I_{F(AV)}$	Mean forward current	180° half sine wave 50Hz Double side cooled,	$T_c=85^{\circ}\text{C}$	150			2490	A
V_{RRM}	Repetitive peak reverse voltage	tp=10ms		150	4300		5000	V
I_{RRM}	Repetitive peak current	at V_{RRM}		150			150	mA
I_{FSM}	Surge forward current	10ms half sine wave		150			26	kA
I^2t	I^2t for fusing coordination	$V_R=0.6V_{RRM}$					3380	A ² s*10 ³
V_{FO}	Threshold voltage			150			0.96	V
r_F	Forward slope resistance						0.17	mΩ
V_{FM}	Peak forward voltage	$I_{FM}=3000\text{A}$, $F=34\text{kN}$		25			2.00	V
Q_{rr}	Recovery charge	$I_{FM}=2000\text{A}$, $t_p=4000\mu\text{s}$, $di/dt=-20\text{A}/\mu\text{s}$, $V_R=100\text{V}$		150		4500		μC
$R_{th(j-c)}$	Thermal resistance Junction to case	D.C. Double side cooled Clamping force 34kN					0.013	°C/W
$R_{th(c-h)}$	Thermal resistance case to heatsink						0.0035	
F_m	Mounting force				27	32	34	kN
T_{vj}	Junction temperature				-40		150	°C
T_{stg}	Stored temperature				-40		160	°C
W_t	Weight					820		g
Outline	P44a							

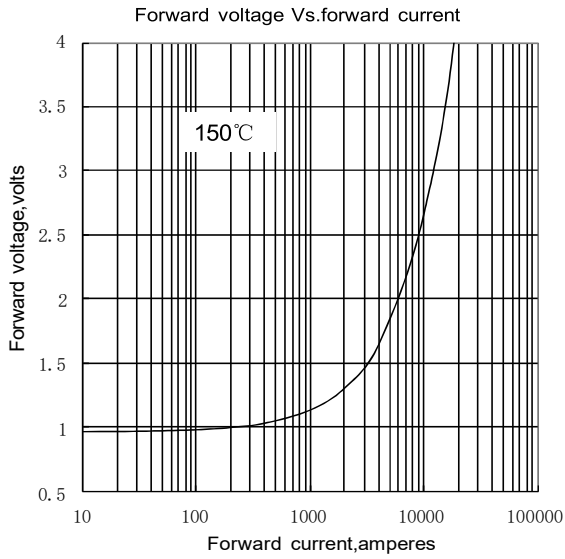


Fig.1

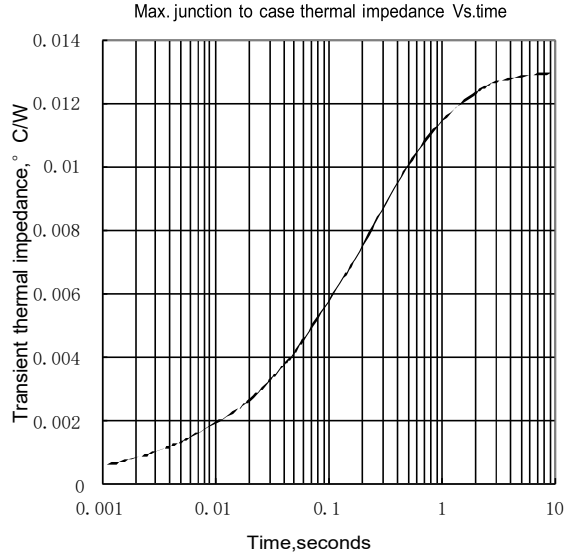


Fig.2

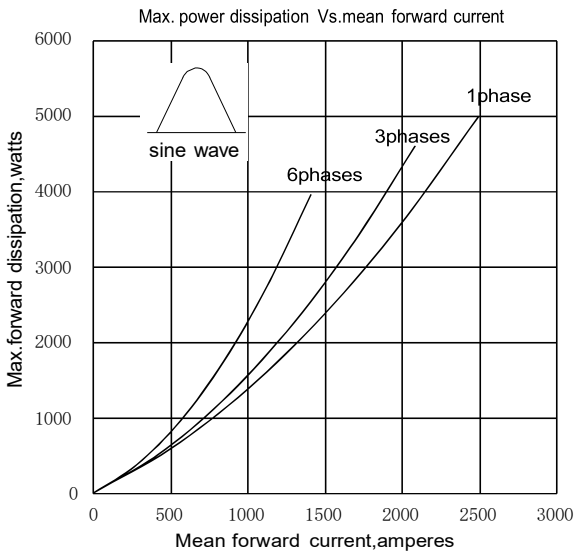


Fig.3

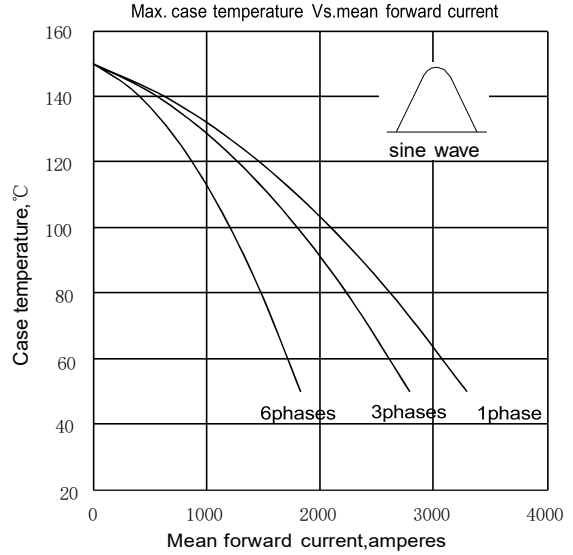


Fig.4

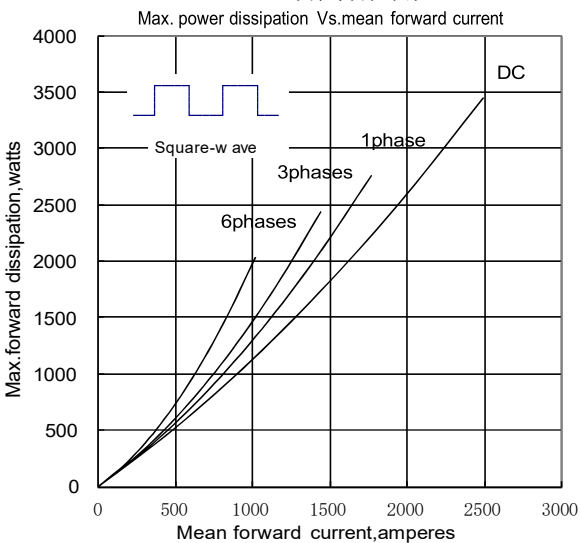


Fig.5

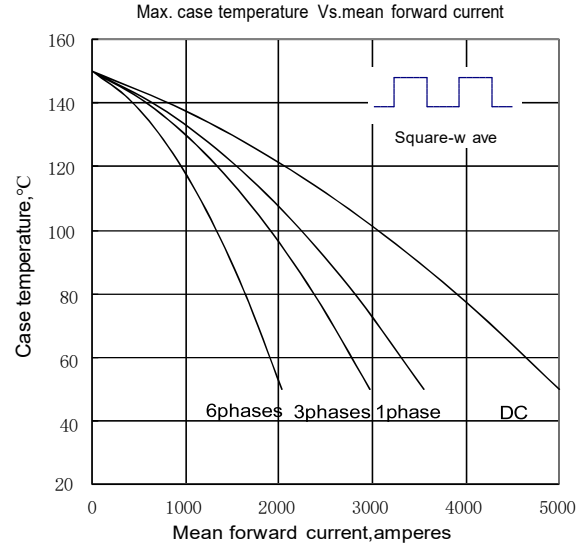


Fig.6

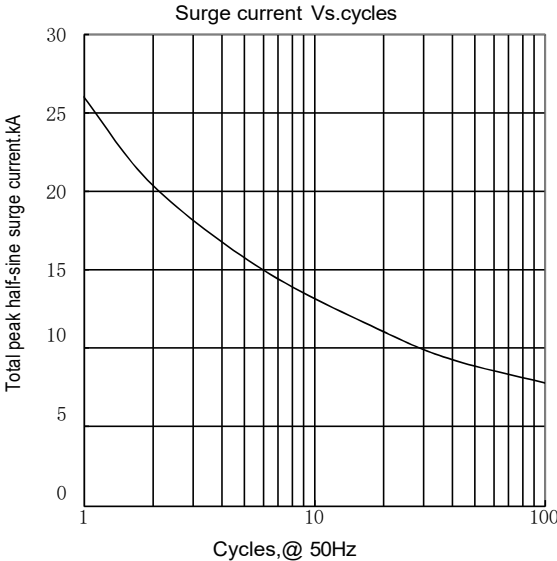
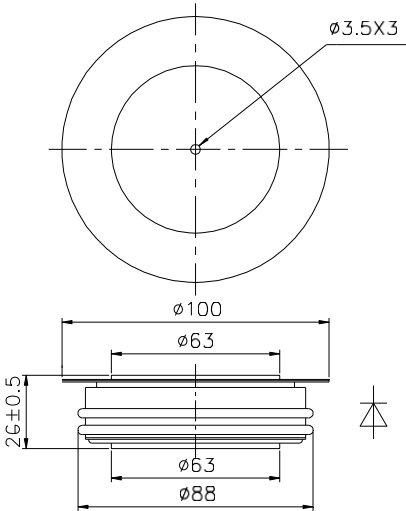


Fig.7

Outline:



Nlps reserves the right to change specifications without notice.