

Features

- Low forward voltage drop
- Soft recovery
- Hermetic metal cases with ceramic insulators

$I_{F(AV)}$ **210A**
 V_{RRM} **4000~5000V**
 t_{rr} **4 μ s**

**Typical Applications**

- Inverters and choppers
- AC. motor control
- Snubber and free-wheeling diodes

SYMBOL	CHARACTERISTIC	TEST CONDITIONS		T _j (°C)	VALUE			UNIT
					Min	Type	Max	
$I_{F(AV)}$	Mean forward current	180° half sine wave 50Hz	T _C =70°C	125			210	A
V_{RRM}	Repetitive peak reverse voltage	tp=10ms		125	4000		5000	V
I_{RRM}	Repetitive peak current	at V _{RRM}		125			20	mA
I_{FSM}	Surge forward current	10ms half sine wave		125			2.7	kA
I^2t	I ² T for fusing coordination	V _R =0.6V _{RRM}					36.5	A ² s*10 ³
V_{FO}	Threshold voltage			125			1.36	V
r_F	Forward slop resistance						3.63	mΩ
V_{FM}	Peak forward voltage	I _{FM} =500A, F=5.0kN		125			3.18	V
I_m	Reverse recovery current	I _{FM} =500A, tp=2000μs, di/dt=-60A/μs, V _R =50V		125		40		A
t_{rr}	Reverse recovery time					4		μs
Q_{rr}	Recovery charge					80		μC
$R_{th(j-c)}$	Thermal resistance Junction to case	DC: double side cooled Clamping force 5.0kN					0.080	°C/W
$R_{th(c-h)}$	Thermal resistance case to heat sink						0.020	
F_m	Mounting force				3.3		5.5	kN
T_{stg}	Stored temperature				-40		160	°C
W_t	Weight					60		g
Outline	P32							

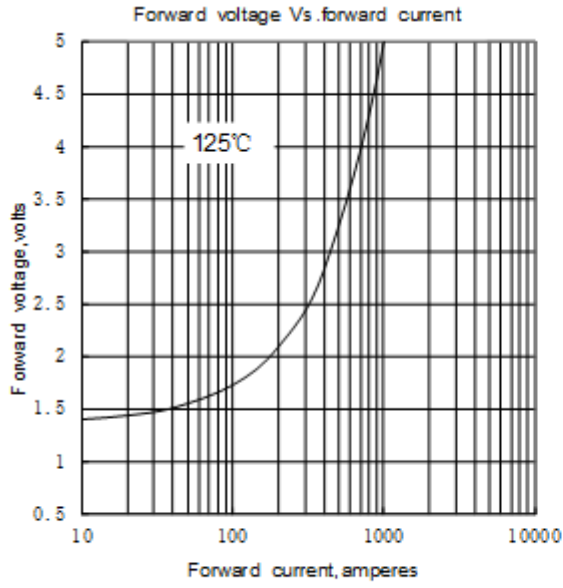


Fig.1

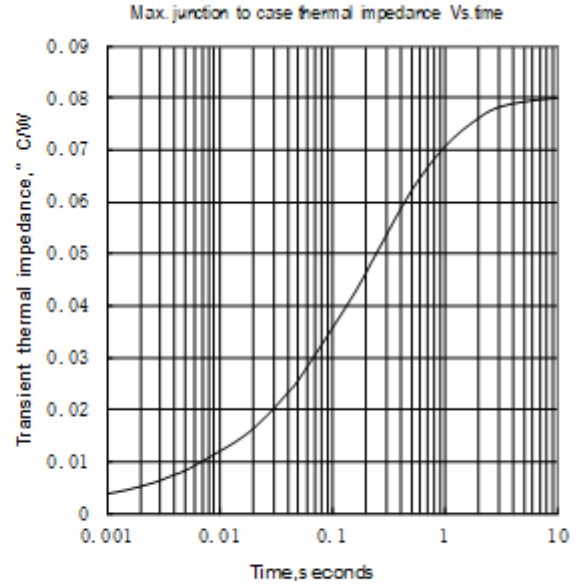


Fig.2

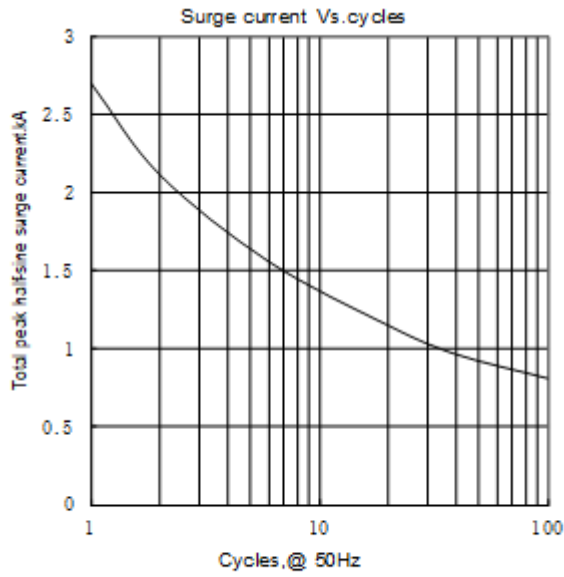
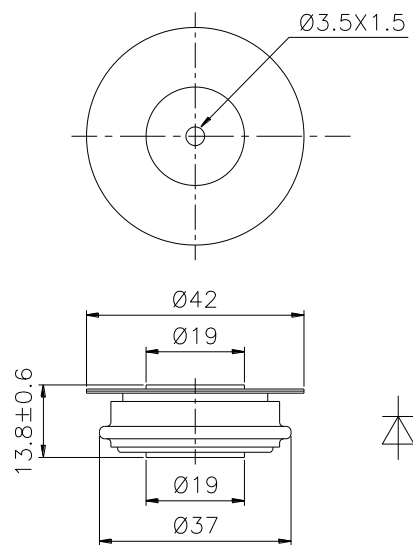


Fig.3



Nlps reserves the right to change specifications without notice.