

Features :

- Interdigitated amplifying gates
- Fast turn-on and high di/dt
- Low switching losses
- Short turn-off time
- Hermetic metal cases with ceramic insulators

$I_{T(AV)}$ 1260A
 V_{DRM}/V_{RRM} 1100 ~ 1400V
 t_q 12 ~ 28 μ s
 I_{TSM} 16.3 kA

Typical Applications

- Inductive heating
- Electronic welders
- Self-commutated inverters
- AC motor speed control

SYMBOL	CHARACTERISTIC	TEST CONDITIONS		$T_j(^{\circ}C)$	VALUE			UNIT	
					Min	Type	Max		
$I_{T(AV)}$	Mean on-state current	180° half sine wave 50Hz Double side cooled,	$T_C=55^{\circ}C$	125			1260	A	
V_{DRM} V_{RRM}	Repetitive peak off-state voltage Repetitive peak reverse voltage	$t_p=10ms$		125	1100		1400	V	
I_{DRM} I_{RRM}	Repetitive peak off-state current Repetitive peak reverse current	at V_{DRM} at V_{RRM}		125			80	mA	
I_{TSM}	Surge on-state current	10ms half sine wave		125			16.3	kA	
I^2t	I^2T for fusing coordination	$V_R=0.6V_{RRM}$						1328	$A^2s \cdot 10^3$
V_{TO}	Threshold voltage			125			1.65	V	
r_T	On-state slop resistance						0.36	m Ω	
V_{TM}	Peak on-state voltage	$I_{TM}=2400A, F=24kN$		25			3.20	V	
dv/dt	Critical rate of rise of off-state voltage	$V_{DM}=0.67V_{DRM}$		125			1000	V/ μ s	
di/dt	Critical rate of rise of on-state current	$V_{DM}=67\%V_{DRM}, to2000A$ Gate pulse $t_r \leq 0.5\mu s, I_{GM}=1.5A$		125			1500	A/ μ s	
Q_{rr}	Recovery charge	$I_{TM}=1000A, t_p=4000\mu s,$ $di/dt=-20A/\mu s, V_R=100V$		125		87	100	μC	
t_q	Circuit commutated turn-off time	$I_{TM}=1000A, t_p=4000\mu s, V_R=100V$ $dv/dt=30V/\mu s, di/dt=-20A/\mu s$		125	12		28	μs	
I_{GT}	Gate trigger current	$V_A=12V, I_A=1A$		25			250	mA	
V_{GT}	Gate trigger voltage					0.8		3.0	V
I_H	Holding current					20		400	mA
I_L	Latching current							500	mA
V_{GD}	Non-trigger gate voltage	$V_{DM}=67\%V_{DRM}$		125			0.3	V	
$R_{th(j-c)}$	Thermal resistance Junction to case	D.C. double side cooled Clamping force 24kN					0.020	$^{\circ}C/W$	
$R_{th(c-h)}$	Thermal resistance case to heat sink						0.005		
F_m	Mounting force				19		26	kN	
T_{vj}	Junction temperature				-40		125	$^{\circ}C$	
T_{stg}	Stored temperature				-40		140	$^{\circ}C$	
W_t	Weight					440		g	
Outline	P11								

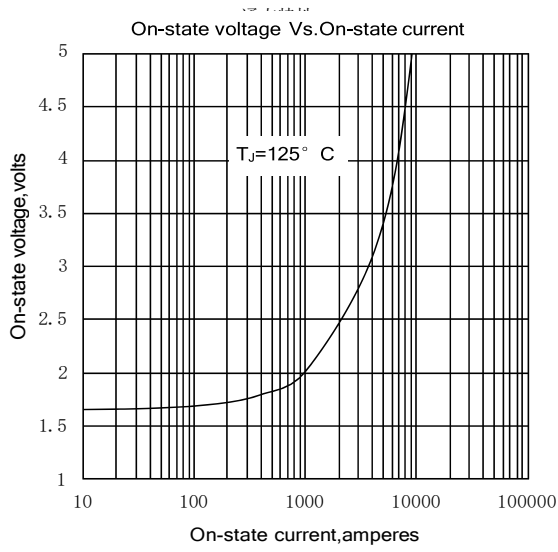


Fig. 1

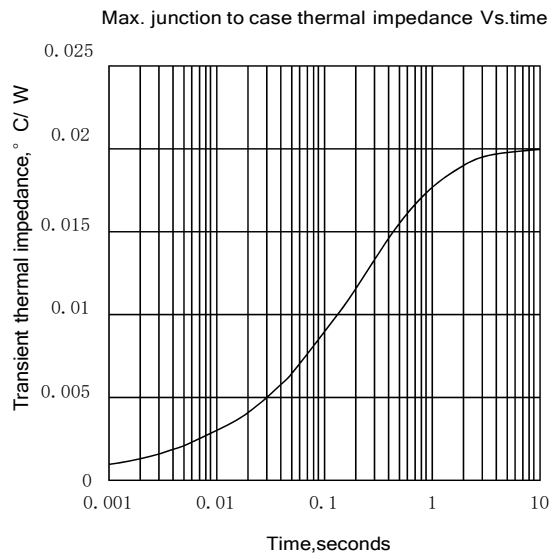


Fig. 2

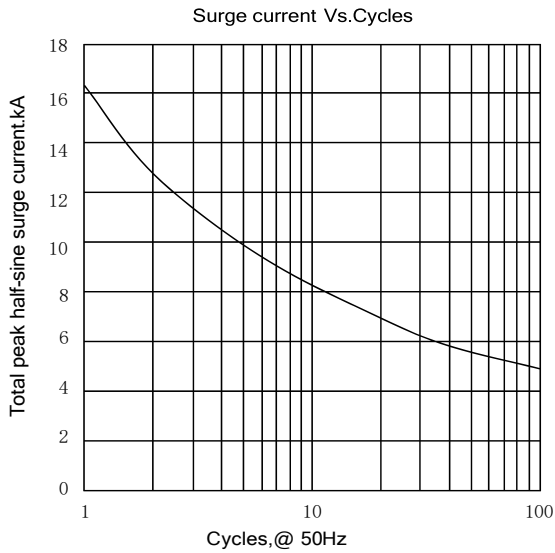


Fig. 3

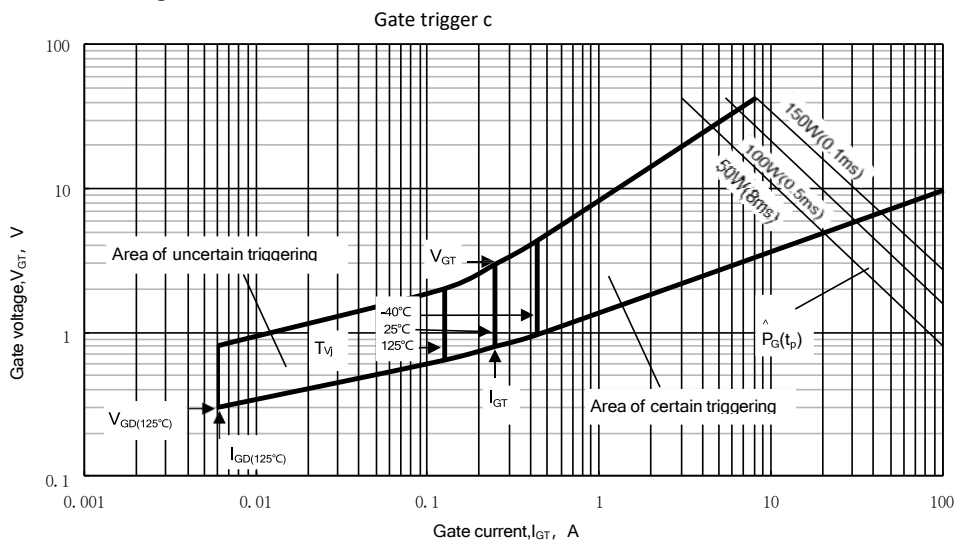
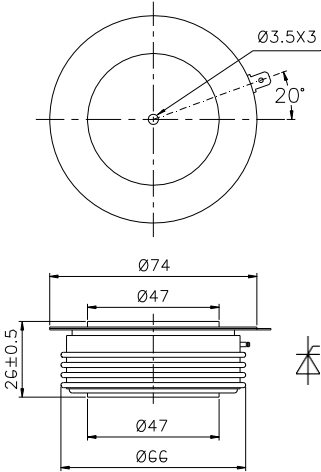


Fig. 4

Outline:



Nlps reserves the right to change specifications without notice.