

**Features :**

- Isolated mounting base 3000V~
- Pressure contact technology with Increased power cycling capability
- Space and weight saving

**Typical Applications :**

- Various rectifiers
- DC supply for PWM inverter

$V_{RSM}$	$V_{RRM}$	品名
2100V	2000V	Mx800D200
2300V	2200V	Mx800D220
2600V	2500V	Mx800D250

SYMBOL	CHARACTERISTIC	TEST CONDITIONS	$T_j(^{\circ}C)$	VALUE			UNIT
				Min	Type	Max	
$I_{F(AV)}$	Mean forward current	180° half sine wave 50Hz Single side cooled, $T_C=100^{\circ}C$	150			800	A
$I_{F(RMS)}$	RMS forward current					1256	A
$I_{RRM}$	Repetitive peak current	at $V_{RRM}$	150			45	mA
$I_{FSM}$	Surge forward current	$V_R=60\%V_{RRM}$ , $t=10ms$ half sine	150			22	kA
$I^2t$	$I^2t$ for fusing coordination					2420	$10^3A^2s$
$V_{FO}$	Threshold voltage		150			0.88	V
$r_F$	Forward slope resistance					0.16	mΩ
$V_{FM}$	Peak forward voltage	$I_{FM}=2400A$	25			1.64	V
$R_{th(j-c)}$	Thermal resistance Junction to case	D.C. Single side cooled per chip				0.052	$^{\circ}C/W$
$R_{th(c-h)}$	Thermal resistance case to heatsink	D.C. Single side cooled per chip				0.024	$^{\circ}C/W$
$V_{iso}$	Isolation voltage	50Hz,R.M.S, $t=1min,I_{iso}:1mA(MAX)$		3000			V
$F_m$	Terminal connection torque(M12)			12		16	N·m
	Mounting torque(M8)			10		12	N·m
$T_{vj}$	Junction temperature			-40		150	$^{\circ}C$
$T_{stg}$	Stored temperature			-40		125	$^{\circ}C$
$W_t$	Weight				3310		g
Outline	M07						

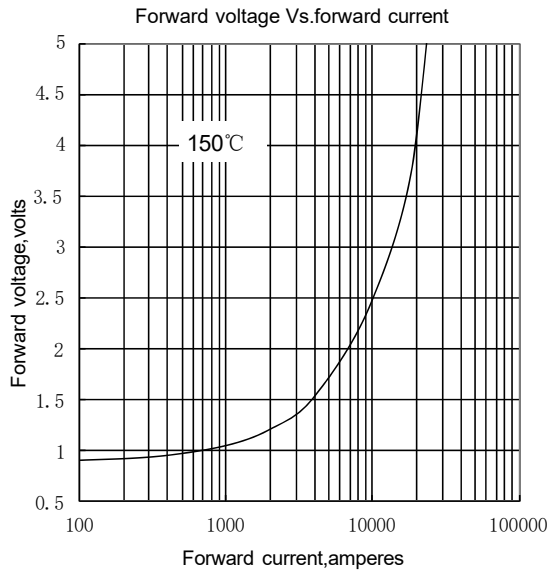


Fig.1

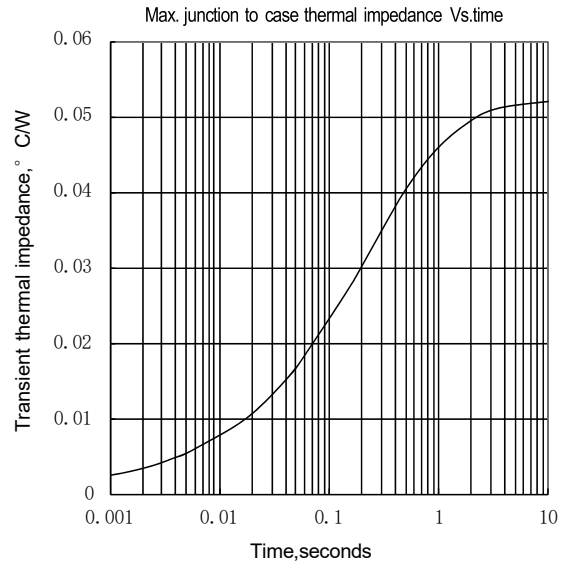


Fig.2

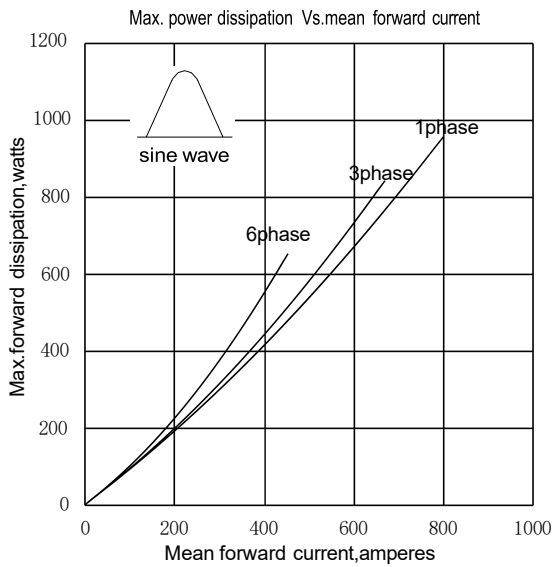


Fig.3

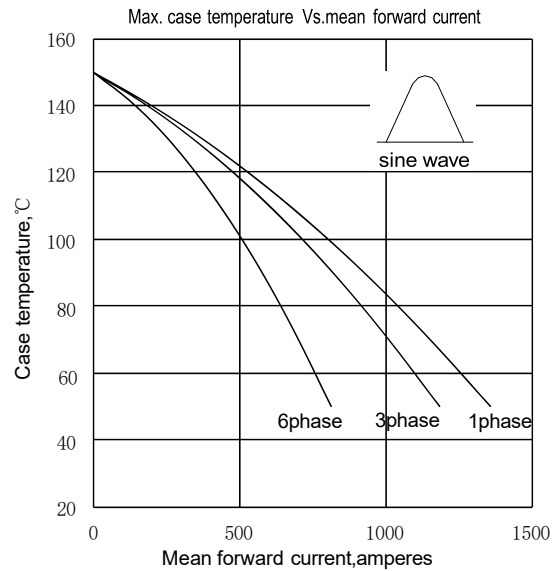


Fig.4

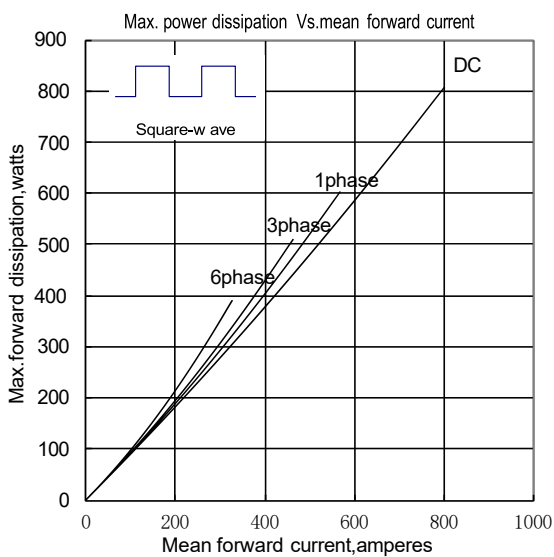


Fig.5

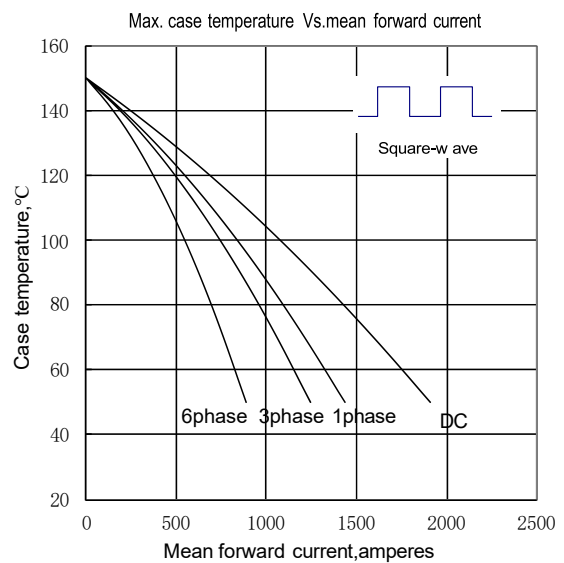


Fig.6

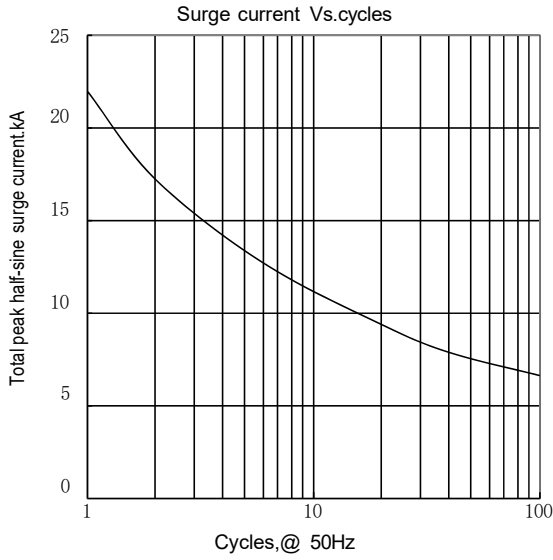
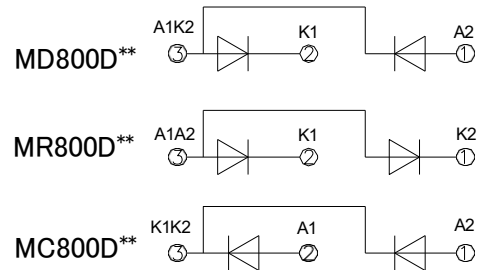
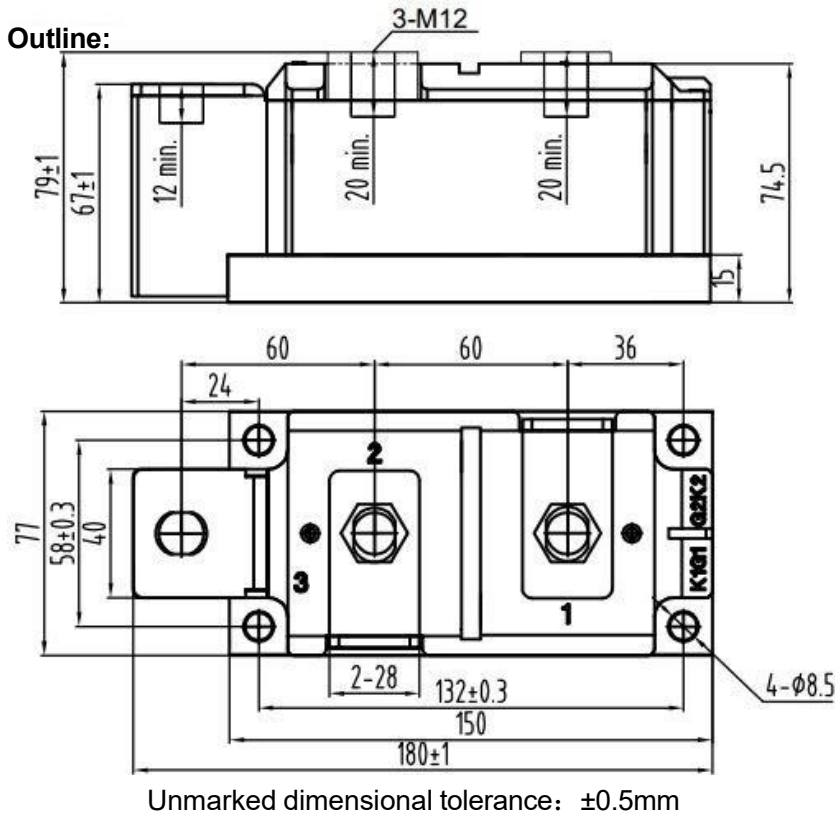


Fig.7



NIPS reserves the right to change specifications without notice.