

Features

- > Isolated mounting base 4000V~
- > Pressure contact technology with Increased power cycling capability
- > Space and weight saving

Typical Applications

- > Various rectifiers
- > DC supply for PWM inverter

V _{RSM}	V _{RRM}	品名
2700V	2600V	Mx450D260
2900V	2800V	Mx450D280
3100V	3000V	Mx450D300
3300V	3200V	Mx450D320
3500V	3400V	Mx450D340
3700V	3600V	Mx450D360

SYMBOL	CHARACTERISTIC	TEST CONDITIONS	T _j (°C)	VALUE			UNIT
				Min	Type	Max	
I _{F(AV)}	Mean forward current	180° half sine wave 50Hz Single side cooled, T _C =100°C	150			450	A
I _{F(RMS)}	RMS forward current					706	A
I _{RRM}	Repetitive peak current	at V _{RRM}	150			50	mA
I _{FSM}	Surge forward current	V _R =60%V _{RRM} ,t=10ms half sine,	150			13	kA
I ² t	I ² t for fusing coordination					845	10 ³ A ² s
V _{Fo}	Threshold voltage		150			0.82	V
r _F	Forward slope resistance					0.62	mΩ
V _{FM}	Peak forward voltage	I _{FM} =1200A	25			1.72	V
R _{th(j-c)}	Thermal resistance Junction to case	D.C. Single side cooled per chip				0.075	°C/W
R _{th(c-h)}	Thermal resistance case to heatsink	D.C. Single side cooled per chip				0.024	°C/W
V _{iso}	Isolation voltage	50Hz,R.M.S,t=1min,I _{iso} :1mA(MAX)		4000			V
F _m	Terminal connection torque(M10)			10		12	N·m
	Mounting torque(M6)			4.5		6.0	N·m
T _{vj}	Junction temperature			-40		150	°C
T _{stg}	Stored temperature			-40		125	°C
W _t	Weight				1540		g
Outline	M06						

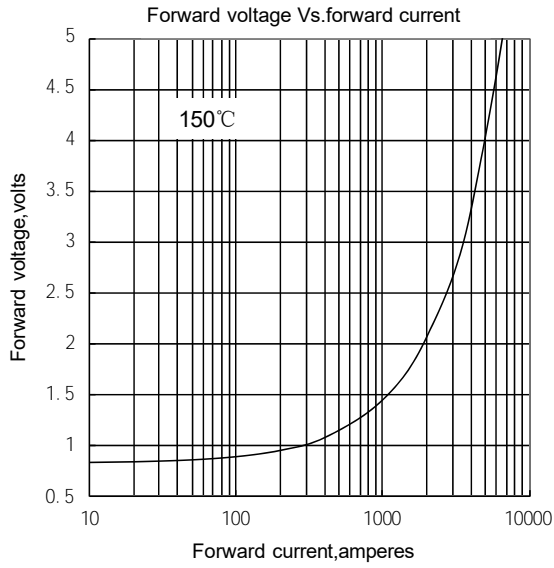


Fig.1

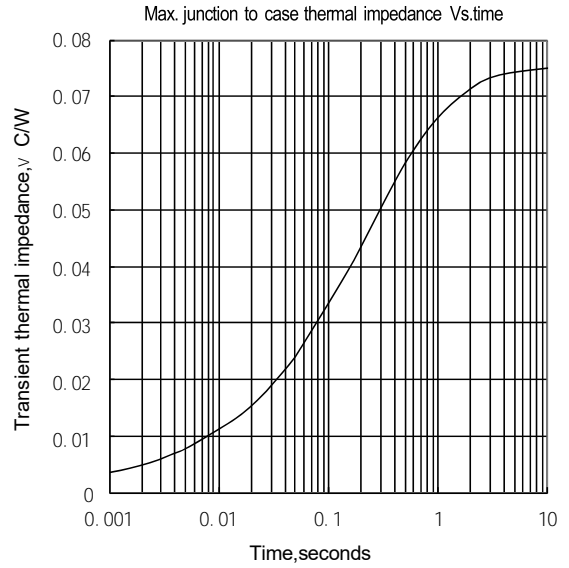


Fig.2

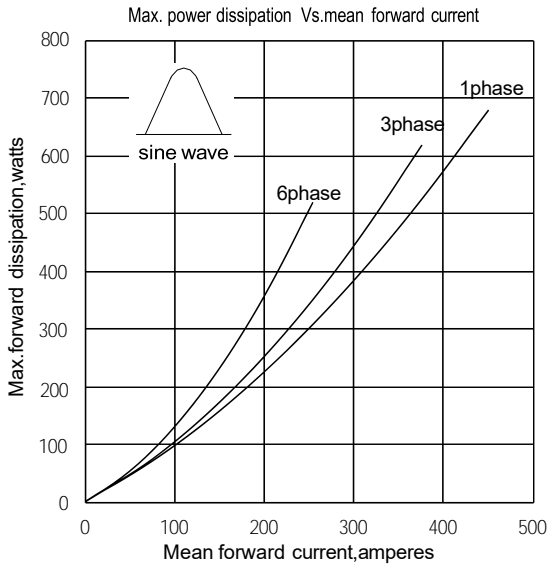


Fig.3

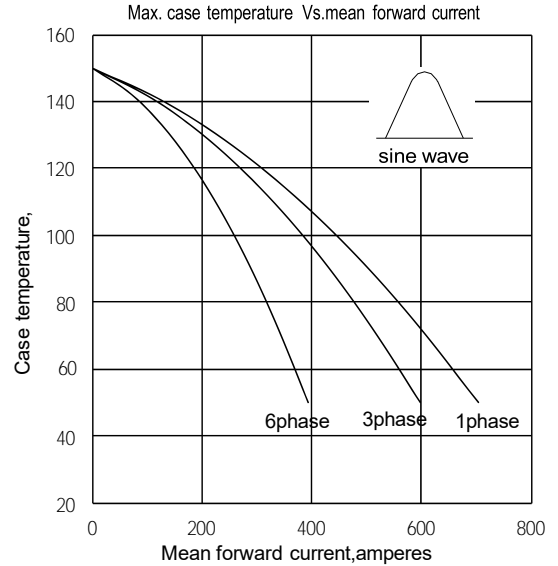


Fig.4

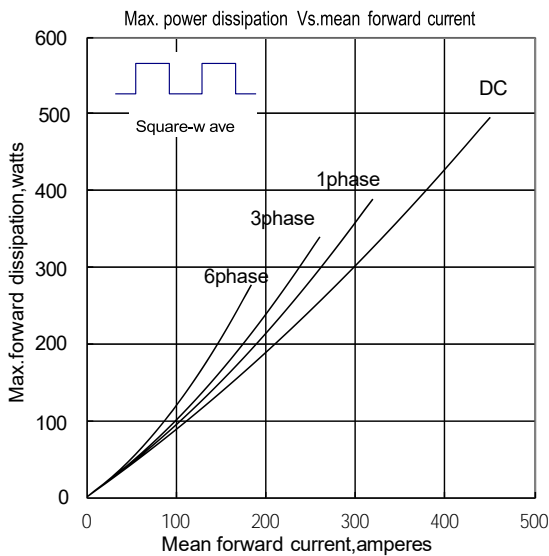


Fig.5

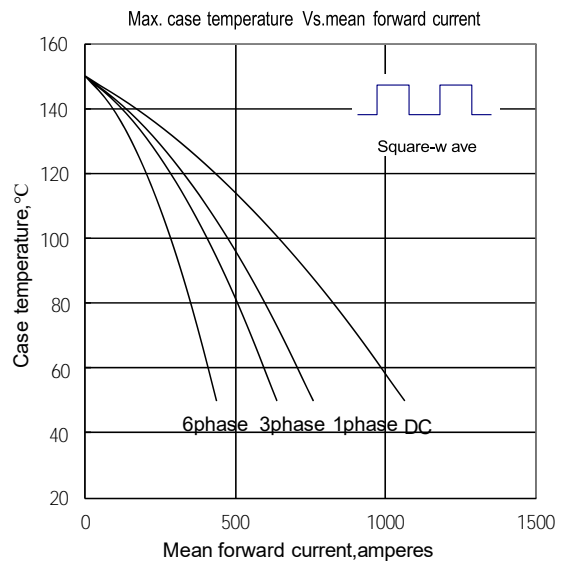


Fig.6

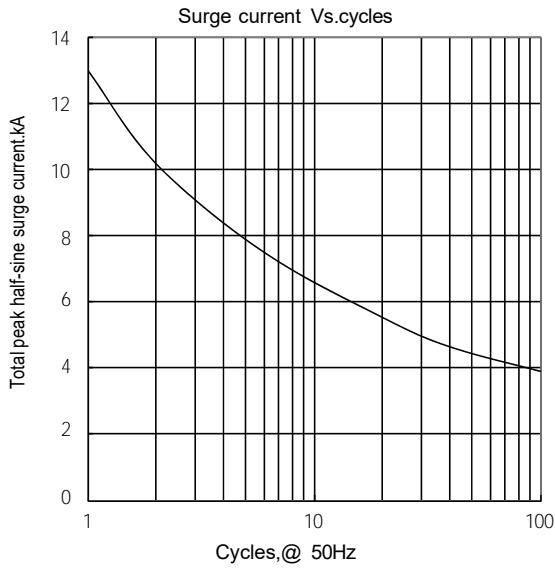
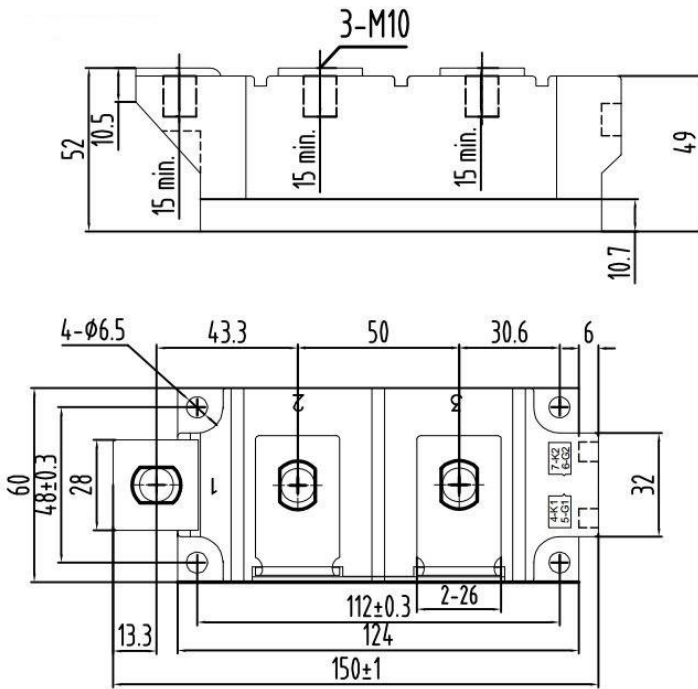


Fig.7

Outline:



Unmarked dimensional tolerance ±0.5mm

