

Features :

- Isolated mounting base 3000V~
- Pressure contact technology with Increased power cycling capability
- Space and weight saving

Typical Applications :

- Various rectifiers
- DC supply for PWM inverter

V _{RSM}	V _{RRM}	品名
700V	600V	Mx350D60
900V	800V	Mx350D80
1100V	1000V	Mx350D100
1300V	1200V	Mx350D120
1500V	1400V	Mx350D140
1700V	1600V	Mx350D160
1900V	1800V	Mx350D180

SYMBOL	CHARACTERISTIC	TEST CONDITIONS	T _J (°C)	VALUE			UNIT
				Min	Type	Max	
I _{F(AV)}	Mean forward current	180° half sine wave 50Hz Single side cooled, T _C =100°C	150			350	A
I _{F(RMS)}	RMS forward current					550	A
I _{RRM}	Repetitive peak current	at V _{RRM}	150			30	mA
I _{FSM}	Surge forward current	V _R =60%V _{RRM} ,t=10ms half sine,	150			12.0	kA
I ² t	I ² t for fusing coordination					720	10 ³ A ² s
V _{FO}	Threshold voltage		150			0.75	V
r _F	Forward slope resistance					0.61	mΩ
V _{FM}	Peak forward voltage	I _{FM} =1050A	25			1.47	V
R _{th(j-c)}	Thermal resistance Junction to case	D.C. Single side cooled per chip				0.110	°C/W
R _{th(c-h)}	Thermal resistance case to heatsink	D.C. Single side cooled per chip				0.040	°C/W
V _{iso}	Isolation voltage	50Hz,R.M.S,t=1min,I _{iso} :1mA(MAX)		3000			V
F _m	Terminal connection torque(M10)			10		12	N·m
	Mounting torque(M6)			4.5		6.0	N·m
T _{vj}	Junction temperature			-40		150	°C
T _{stg}	Stored temperature			-40		125	°C
W _t	Weight				770		g
Outline	M03						

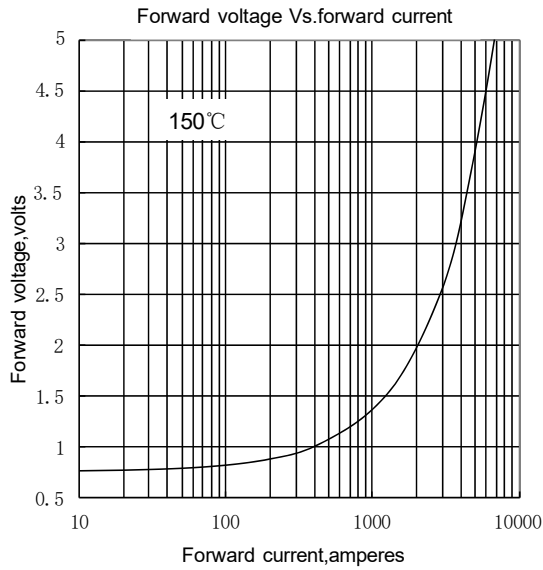


Fig.1

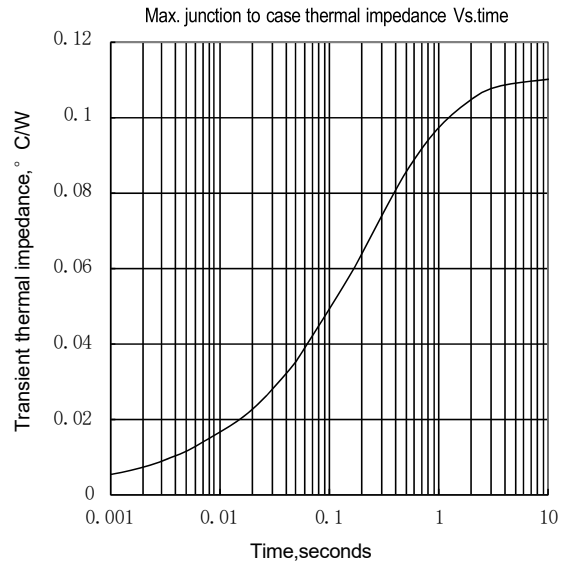


Fig.2

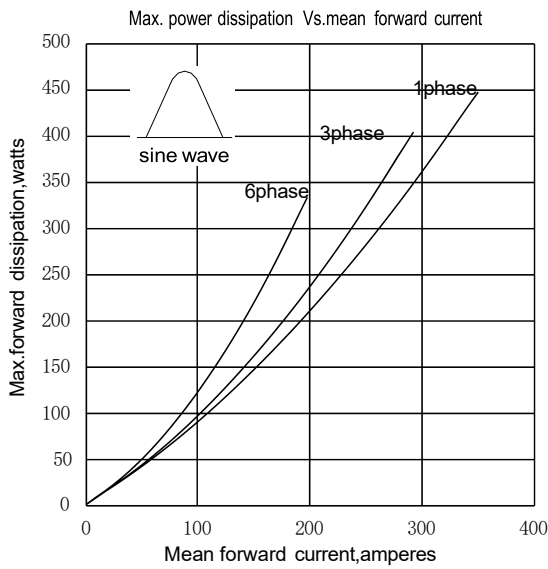


Fig.3

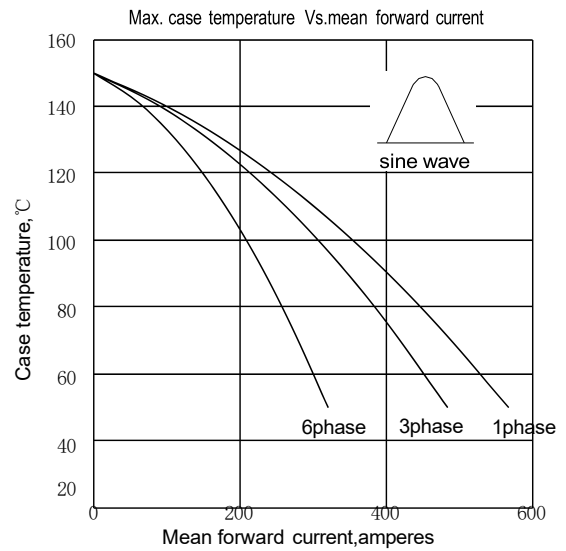


Fig.4

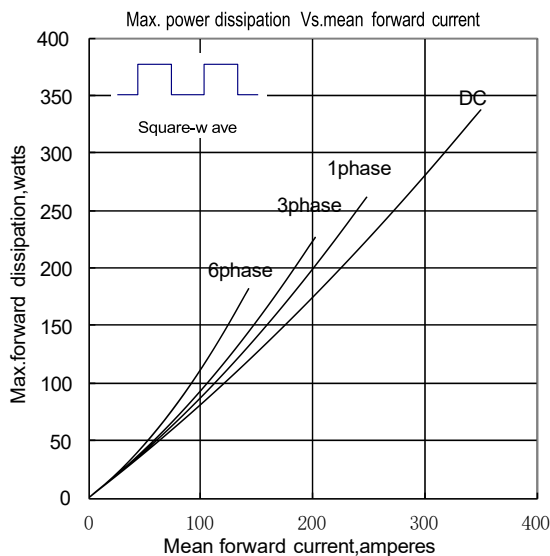


Fig.5

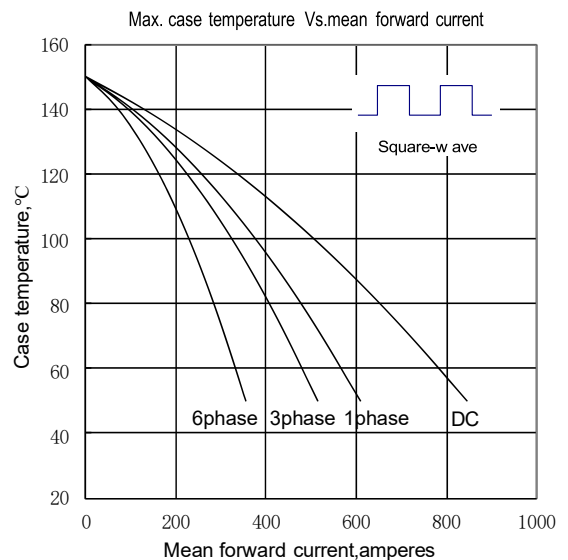


Fig.6

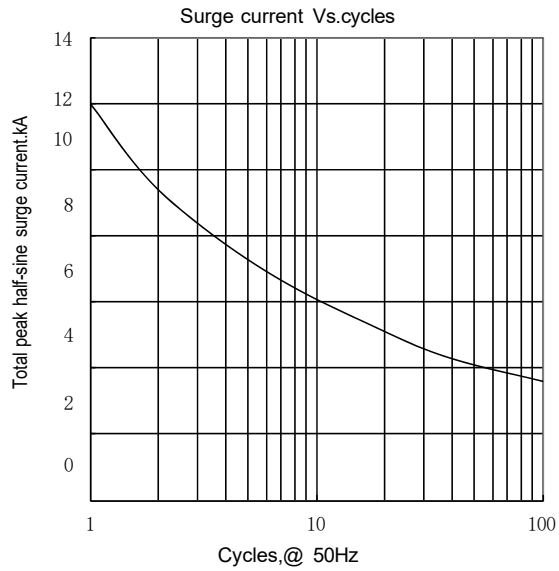
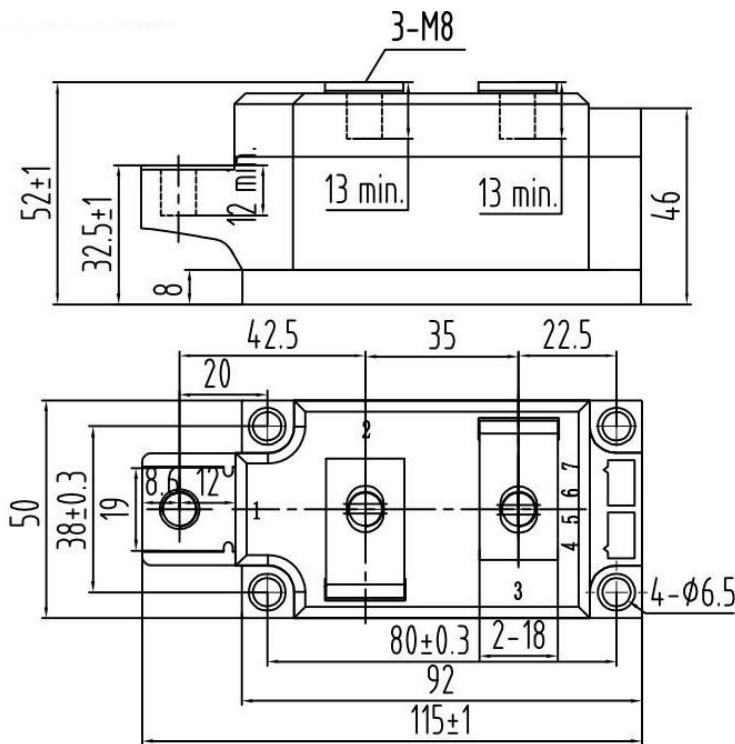


Fig.7

Outline:



Unmarked dimensional tolerance: ±0.5mm

