

Features :

- Isolated mounting base 2500V~
- Solder joint technology with Increased power cycling capability
- Space and weight saving

Typical Applications

- Inverter
- Inductive heating
- Chopper

V _{RSM}	V _{RRM}	品名
900V	800V	MT250D80S
1100V	1000V	MT250D100S
1300V	1200V	MT250D120S
1500V	1400V	MT250D140S
1700V	1600V	MT250D160S
1900V	1800V	MT250D180S

SYMBOL	CHARACTERISTIC	TEST CONDITIONS	T _j (°C)	VALUE			UNIT
				Min	Type	Max	
I _O	DC output current	Three-phase full wave rectifying circuit, T _C =100°C	150			250	A
I _{RRM}	Repetitive peak current	at V _{RRM}	150			12	mA
I _{FSM}	Surge forward current	10ms half sine wave V _R =0	150			2.0	kA
			45			2.4	kA
I ² t	I ² t for fusing coordination	V _R =0	150			20	10 ³ A ² s
			45			28.8	10 ³ A ² s
V _{FO}	Threshold voltage		150			0.72	V
r _F	Forward slope resistance					1.8	mΩ
V _{FM}	Peak forward voltage	I _{FM} =250A	25			1.50	V
R _{th(j-c)}	Thermal resistance Junction to case	D.C. Single side cooled, per total				0.07	°C/W
R _{th(c-h)}	Thermal resistance case to heatsink	D.C. Single side cooled, per total				0.07	°C/W
V _{iso}	Isolation voltage	50Hz,R.M.S,t=1min,I _{iso} :1mA(max)		2500			V
F _m	Terminal connection torque(M6)			3.5		5.0	N·m
	Mounting torque(M6)			3.5		5.0	N·m
T _{vj}	Junction temperature			-40		150	°C
T _{slg}	Stored temperature			-40		125	°C
W _t	Weight				240		g
Outline	M31						

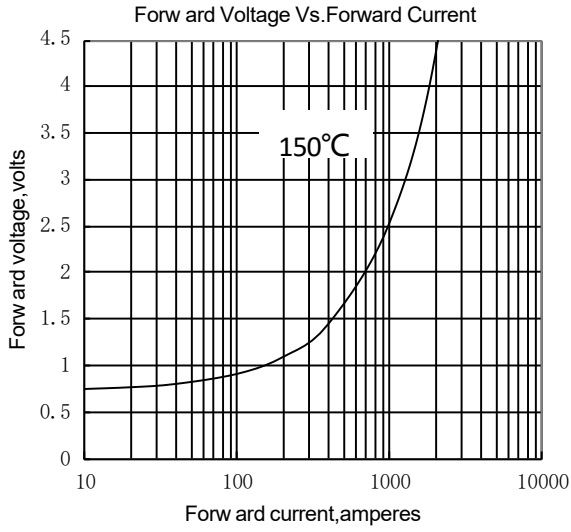


Fig.1

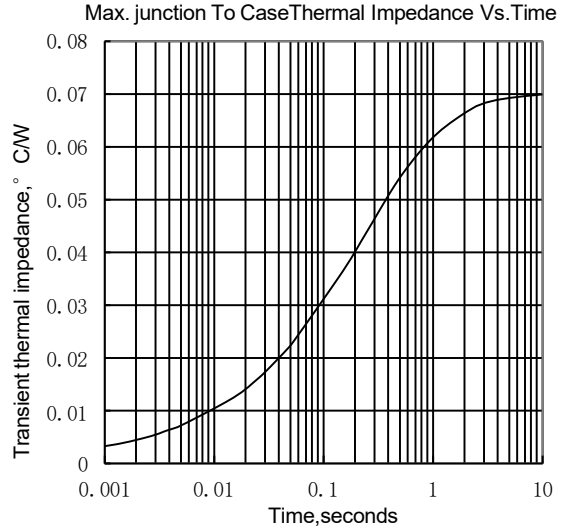


Fig.2

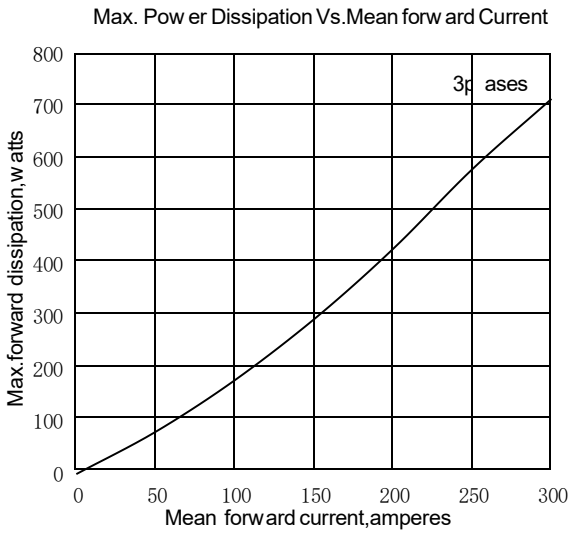


Fig.3

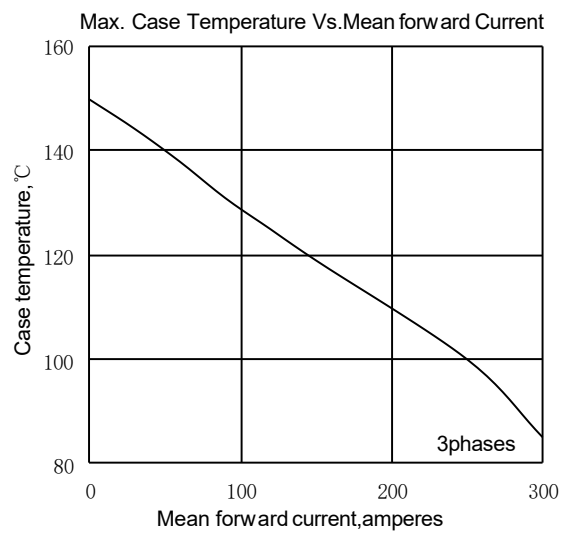


Fig.4

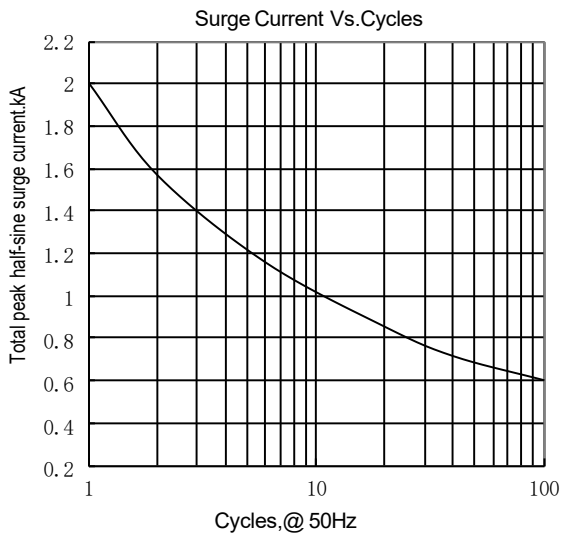
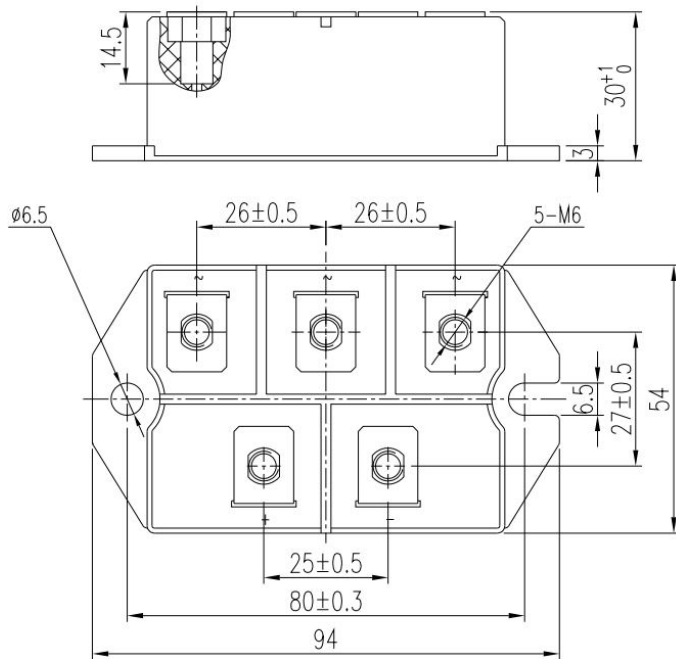
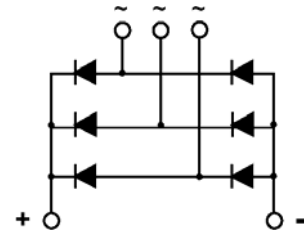


Fig.5

Outline:



MT250D**S



Unmarked dimensional tolerance: ±0.5mm