

Features:

- Isolated mounting base 4200V~
- Pressure contact technology with Increased power cycling capability
- Space and weight saving

Typical Applications

- Various rectifiers
- DC supply for PWM inverter

V _{RSM}	V _{RRM}	品名
3700V	3600V	MH930D360
3900V	3800V	MH930D380
4100V	4000V	MH930D400
4300V	4200V	MH930D420
4500V	4400V	MH930D440

SYMBOL	CHARACTERISTIC	TEST CONDITIONS	T _j (°C)	VALUE			UNIT
				Min	Type	Max	
I _{F(AV)}	Mean forward current	180° half sine wave 50Hz Single side cooled, T _C =100°C	150			930	A
I _{F(RMS)}	RMS forward current		150			1460	A
I _{RRM}	Repetitive peak current	at V _{RRM}	150			100	mA
I _{FSM}	Surge forward current	10ms half sine wave , V _R =0.6V _{RRM}	150			28	kA
I ² t	I ² t for fusing coordination					3920	10 ³ A ² s
V _{FO}	Threshold voltage		150			0.86	V
r _F	Forward slope resistance					0.28	mΩ
V _{FM}	Peak forward voltage	I _{FM} =3000A	25			2.04	V
R _{th(j-c)}	Thermal resistance Junction to case	D.C. Single side cooled				0.042	°C/W
R _{th(c-h)}	Thermal resistance case to heatsink	D.C. Single side cooled				0.010	°C/W
V _{iso}	Isolation voltage	50Hz,R.M.S,t=1min,I _{iso} :1mA(max)		4200			V
F _m	Terminal connection torque(M12)			12.0		14.0	N·m
	Mounting torque(M6)			4.5		6.0	N·m
T _{vj}	Junction temperature			-40		150	°C
T _{stg}	Stored temperature			-40		125	°C
W _t	Weight				2700		g
Outline	M10						

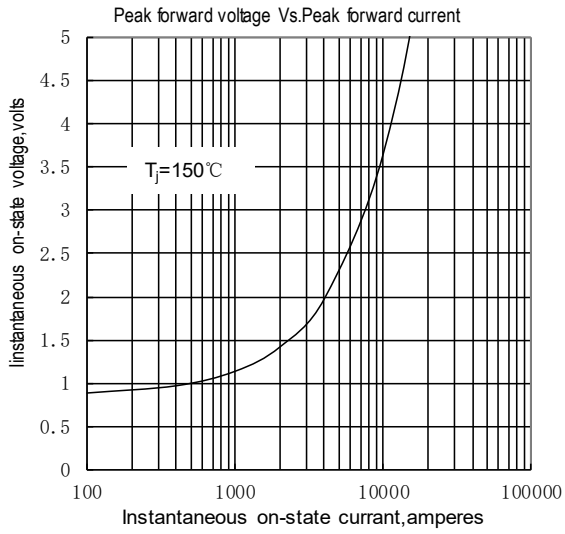


Fig.1

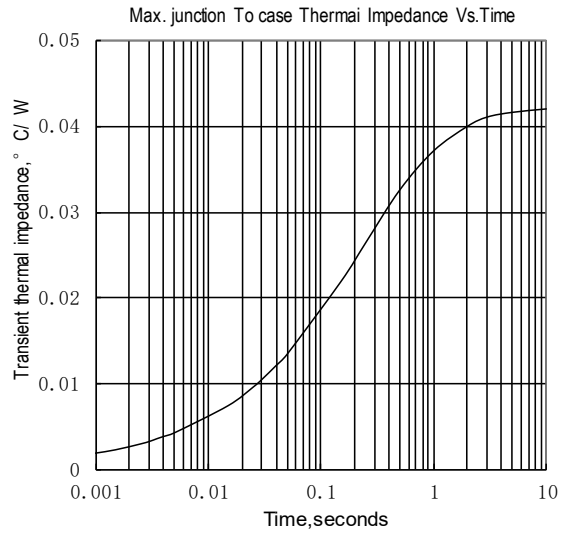


Fig.2

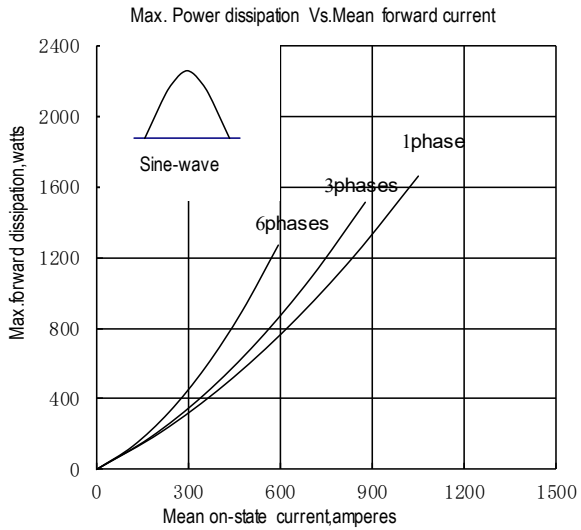


Fig.3

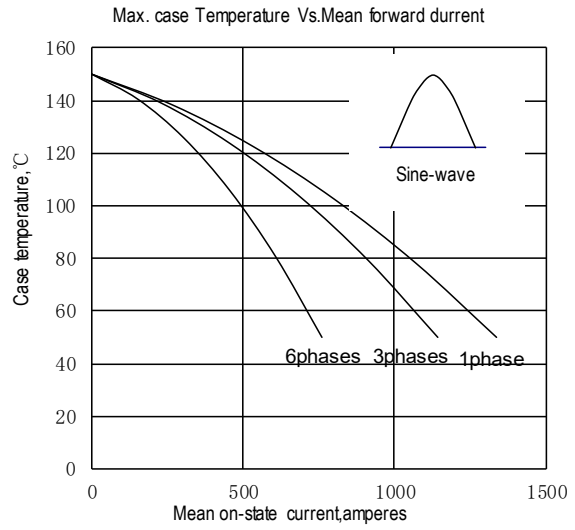


Fig.4

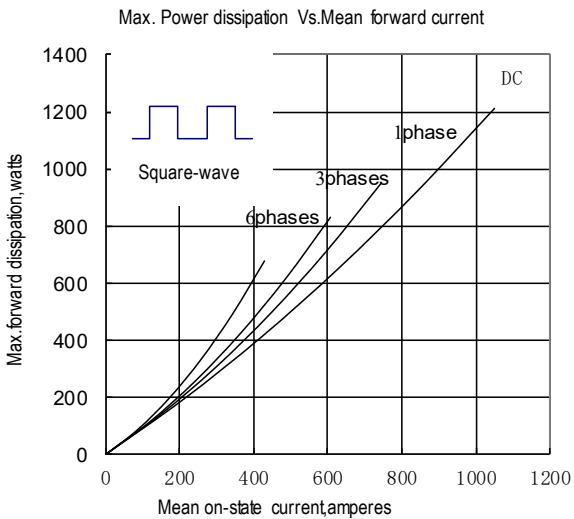


Fig.5

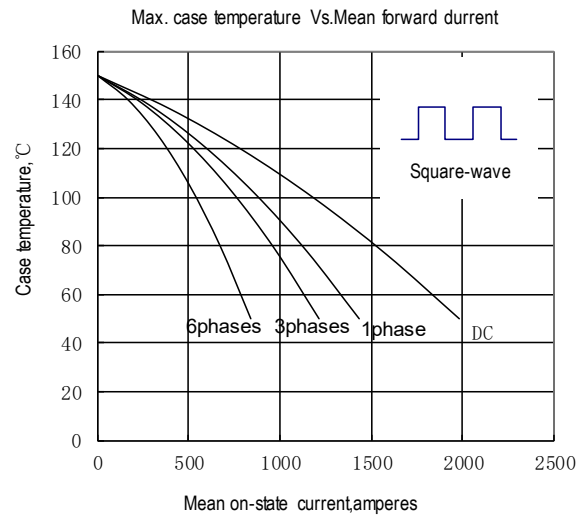


Fig.6

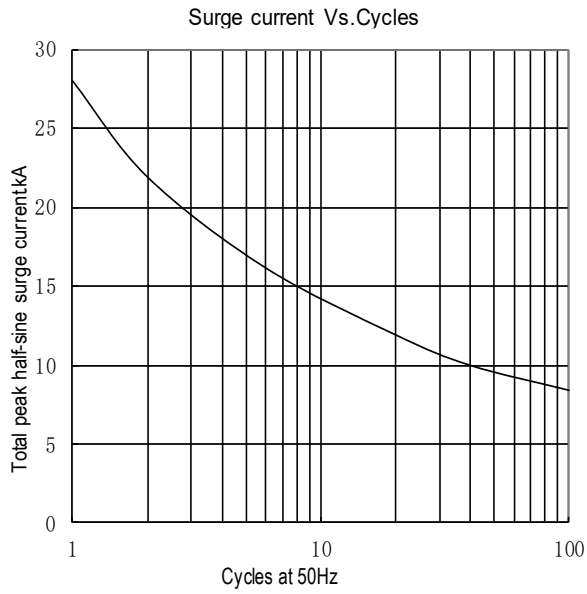
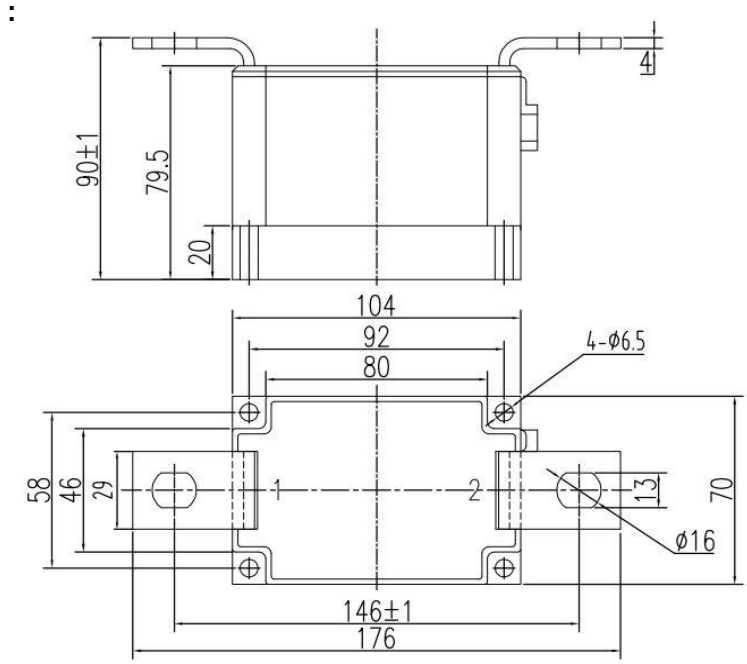


Fig.7



Unmarked dimensional tolerance: ±0.5mm

MH930D **

